

MRP-L18 Polyclonal Antibody

Description

Product type	Primary Antibody
Code	BT-AP05576
Host	Rabbit
Isotype	IgG
Size	20ul, 50ul, 100ul
Immunogen	The antiserum was produced against synthesized peptide derived from human MRPL18. AA range:1-50
Mol wt	20577
Species reactivity	Human
Clonality	Polyclonal
Recommended application	WB, IHC-p, ELISA
Concentration	1 mg/ml
Full name	MRP-L18 Antibody
Synonyms	MRPL18; HSPC071; 39S ribosomal protein L18; mitochondrial; L18mt; MRP-L18

This product is for research use only, not for use in human, therapeutic or diagnostic procedure.

Background

MRPL18 encodes a protein component of the larger 39S subunit of mitochondrial ribosome. 39S ribosomal protein L18 mitochondrial may also aid in the import of nuclear-encoded 5S rRNA into mitochondria. Alternative splicing results in multiple transcript variants, most of which are not predicted to encode a protein. A pseudogene of this gene is found on chromosome 16.

Recommended Dilution

WB: 1: 500 - 1: 2000

IHC: 1: 100 - 1: 300

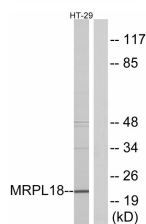
ELISA: 1: 20000

Not yet tested in other applications.

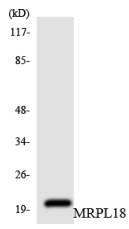
Images



Western Blot analysis of various cells using MRP-L18 Polyclonal Antibody diluted at 1:1000



Western blot analysis of lysates from HT-29 cells, using MRPL18 Antibody. The lane on the right is blocked with the synthesized peptide.



Western blot analysis of the lysates from HUVEC cells using MRPL18 antibody.

Storage

-20°C for one year

501 Changsheng S Rd, Nanhu Dist, Jiaxing, Zhejiang, China

Tel: 86 21 31007137 | E-mail: save@bt-laboratory.com | www.bt-laboratory.com