

MRP-L35 Polyclonal Antibody

Description

| | |
|--------------------------------|--|
| Product type | Primary Antibody |
| Code | BT-AP05585 |
| Host | Rabbit |
| Isotype | IgG |
| Size | 20ul, 50ul, 100ul |
| Immunogen | Synthesized peptide derived from MRP-L35 . at AA range: 80-160 |
| Mol wt | 21514 |
| Species reactivity | Human, Mouse |
| Clonality | Polyclonal |
| Recommended application | WB, ELISA |
| Concentration | 1 mg/ml |
| Full name | MRP-L35 Antibody |
| Synonyms | MRPL35; BM-007; 39S ribosomal protein L35, mitochondrial; L35mt; MRP-L35 |

This product is for research use only, not for use in human, therapeutic or diagnostic procedure.

Background

Mammalian mitochondrial ribosomal proteins are encoded by nuclear genes and help in protein synthesis within the mitochondrion. Mitochondrial ribosomes(mitoribosomes) consist of a small 28S subunit and a large 39S subunit. They have an estimated 75% protein to rRNA composition compared to prokaryotic ribosomes, where this ratio is reversed. Another difference between mammalian mitoribosomes and prokaryotic ribosomes is that the latter contain a 5S rRNA. Among different species, the proteins comprising the mitoribosome differ greatly in sequence, and sometimes in biochemical properties, which prevents easy recognition by sequence homology. MRPL35(mitochondrial ribosomal protein L35) encodes a 39S subunit protein. Sequence analysis identified three transcript variants. Pseudogenes corresponding to MRPL35 are found on chromosomes 6p, 10q, and Xp.

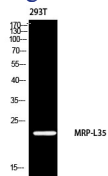
Recommended Dilution

WB: 1: 500 - 1: 2000

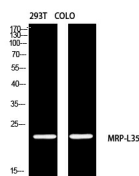
ELISA: 1: 10000

Not yet tested in other applications.

Images



Western blot analysis of 293 using MRP-L35 antibody. Antibody was diluted at 1:2000. Secondary antibody was diluted at 1:20000



Western blot analysis of 293T COLO using MRP-L35 antibody. Antibody was diluted at 1:2000. Secondary antibody was diluted at 1:20000

Storage

-20°C for one year

501 Changsheng S Rd, Nanhu Dist, Jiaxing, Zhejiang, China

Tel: 86 21 31007137 | E-mail: save@bt-laboratory.com | www.bt-laboratory.com