

MRP-L41 Polyclonal Antibody

Description

Product type	Primary Antibody
Code	BT-AP05589
Host	Rabbit
Isotype	IgG
Size	20ul, 50ul, 100ul
Immunogen	The antiserum was produced against synthesized peptide derived from human MRPL41. AA range:81-130
Mol wt	15383
Species reactivity	Human, Mouse, Rat
Clonality	Polyclonal
Recommended application	WB, IHC-p, ELISA
Concentration	1 mg/ml
Full name	MRP-L41 Antibody
Synonyms	MRPL41; BMRP; MRPL27; RPML27; PIG3; 39S ribosomal protein L41; mitochondrial; L41mt; MRP-L41; 39S ribosomal protein L27 homolog; Bcl-2-interacting mitochondrial ribosomal protein L41; Cell proliferat

This product is for research use only, not for use in human, therapeutic or diagnostic procedure.

Background

Mammalian mitochondrial ribosomal protein L 41 (39S ribosomal protein L41 mitochondrial) is encoded by nuclear gene MRPL41 and help in protein synthesis within the mitochondrion. Mitochondrial ribosomes (mitoribosomes) consist of a small 28S subunit and a large 39S subunit. They have an estimated 75% protein to rRNA composition compared to prokaryotic ribosomes, where this ratio is reversed. Another difference between mammalian mitoribosomes and prokaryotic ribosomes is that the latter contain a 5S rRNA. Among different species, the proteins comprising the mitoribosome differ greatly in sequence, and sometimes in biochemical properties, which prevents easy recognition by sequence homology. This gene encodes a 39S subunit protein that belongs to the YmL27 ribosomal protein family.

Recommended Dilution

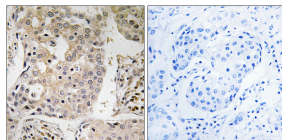
WB: 1: 500 - 1: 2000

IHC: 1: 100 - 1: 300

ELISA: 1: 40000

Not yet tested in other applications.

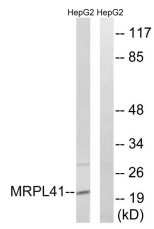
Images



Immunohistochemistry analysis of paraffin-embedded human breast carcinoma tissue, using MRPL41 Antibody. The picture on the right is blocked with the synthesized peptide.



Western Blot analysis of various cells using MRP-L41 Polyclonal Antibody



Storage

-20°C for one year

501 Changsheng S Rd, Nanhu Dist, Jiaxing, Zhejiang, China

Tel: 86 21 31007137 | E-mail: save@bt-laboratory.com | www.bt-laboratory.com