

MRP-L49 Polyclonal Antibody

Description

Product type	Primary Antibody
Code	BT-AP05594
Host	Rabbit
Isotype	IgG
Size	20ul, 50ul, 100ul
Immunogen	Synthesized peptide derived from MRP-L49 . at AA range: 10-90
Mol wt	19198
Species reactivity	Human
Clonality	Polyclonal
Recommended application	WB, IHC-p, ELISA
Concentration	1 mg/ml
Full name	MRP-L49 Antibody
Synonyms	MRPL49; C11orf4; NOF1; OK/SW-cl.67; 39S ribosomal protein L49; mitochondrial; L49mt; MRP-L49; Neighbor of FAU; NOF; Protein NOF1

This product is for research use only, not for use in human, therapeutic or diagnostic procedure.

Background

Mammalian mitochondrial ribosomal proteins are encoded by nuclear genes and help in protein synthesis within the mitochondrion. Mitochondrial ribosomes (mitoribosomes) consist of a small 28S subunit and a large 39S subunit. They have an estimated 75% protein to rRNA composition compared to prokaryotic ribosomes, where this ratio is reversed. Another difference between mammalian mitoribosomes and prokaryotic ribosomes is that the latter contain a 5S rRNA. Among different species, the proteins comprising the mitoribosome differ greatly in sequence, and sometimes in biochemical properties, which prevents easy recognition by sequence homology. Pseudogenes corresponding to MRPL49 (mitochondrial ribosomal protein L49) are found on chromosomes 5q and 8p.

Recommended Dilution

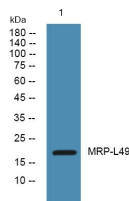
WB: 1: 500 - 1: 2000

IHC: 1: 100 - 1: 300

ELISA: 1: 40000

Not yet tested in other applications.

Images



Western blot analysis of lysates from U2OS cells, primary antibody was diluted at 1:1000, 4° over night

Storage

-20°C for one year