

MRP-S12 Polyclonal Antibody

Description

Product type	Primary Antibody
Code	BT-AP05600
Host	Rabbit
Isotype	IgG
Size	20ul, 50ul, 100ul
Immunogen	The antiserum was produced against synthesized peptide derived from human MRPS12. AA range:21-70
Mol wt	15173
Species reactivity	Human, Mouse
Clonality	Polyclonal
Recommended application	WB, ELISA
Concentration	1 mg/ml
Full name	MRP-S12 Antibody
Synonyms	MRPS12; RPMS12; RPSM12; 28S ribosomal protein S12; mitochondrial; MRP-S12; S12mt; MT-RPS12

This product is for research use only, not for use in human, therapeutic or diagnostic procedure.

Background

28S ribosomal protein S12 mitochondrial (mitochondrial ribosomal protein S12) is encoded by nuclear genes MRPS12 and help in protein synthesis within the mitochondrion. Mitochondrial ribosomes (mitoribosomes) consist of a small 28S subunit and a large 39S subunit. They have an estimated 75% protein to rRNA composition compared to prokaryotic ribosomes, where this ratio is reversed. Another difference between mammalian mitoribosomes and prokaryotic ribosomes is that the latter contain a 5S rRNA. Among different species, the proteins comprising the mitoribosome differ greatly in sequence, and sometimes in biochemical properties, which prevents easy recognition by sequence homology. This gene encodes a 28S subunit protein that belongs to the ribosomal protein S12P family. The encoded protein is a key component of the ribosomal small subunit and controls the decoding fidelity and susceptibility to aminoglycoside antibiotics. The gene for mitochondrial seryl-tRNA synthetase is located upstream and adjacent to this gene, and both genes are possible candidates for the autosomal dominant deafness gene (DFNA4). Splice variants that differ in the 5' UTR have been found for this gene; all three variants encode the same protein.

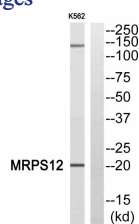
Recommended Dilution

WB: 1: 500 - 1: 2000

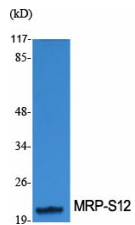
ELISA: 1: 10000

Not yet tested in other applications.

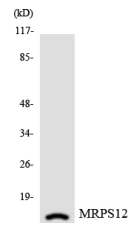
Images



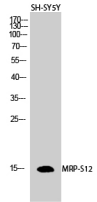
Western blot analysis of MRPS12 Antibody. The lane on the right is blocked with the MRPS12 peptide.



Western Blot analysis of various cells using MRP-S12 Polyclonal Antibody diluted at 1:1000



Western blot analysis of the lysates from HepG2 cells using MRPS12 antibody.



Western Blot analysis of SH-SY5Y cells using MRP-S12 Polyclonal Antibody diluted at 1:1000

Storage

-20°C for one year

501 Changsheng S Rd, Nanhu Dist, Jiaxing, Zhejiang, China

Tel: 86 21 31007137 | E-mail: save@bt-laboratory.com | www.bt-laboratory.com