

MRP-S18A Polyclonal Antibody

Description

Product type	Primary Antibody
Code	BT-AP05603
Host	Rabbit
Isotype	IgG
Size	20ul, 50ul, 100ul
Immunogen	The antiserum was produced against synthesized peptide derived from human MRPS18A. AA range:81-130
Mol wt	22184
Species reactivity	Human, Mouse, Rat
Clonality	Polyclonal
Recommended application	IHC-p, ELISA
Concentration	1 mg/ml
Full name	MRP-S18A Antibody
Synonyms	MRPS18A; 28S ribosomal protein S18a; mitochondrial; MRP-S18-a; Mrps18a; S18mt-a; 28S ribosomal protein S18-3, mitochondrial; MRP-S18-3

This product is for research use only, not for use in human, therapeutic or diagnostic procedure.

Background

Mammalian mitochondrial ribosomal proteins are encoded by nuclear genes and help in protein synthesis within the mitochondrion. Mitochondrial ribosomes (mitoribosomes) consist of a small 28S subunit and a large 39S subunit. They have an estimated 75% protein to rRNA composition compared to prokaryotic ribosomes, where this ratio is reversed. Another difference between mammalian mitoribosomes and prokaryotic ribosomes is that the latter contain a 5S rRNA. Among different species, the proteins comprising the mitoribosome differ greatly in sequence, and sometimes in biochemical properties, which prevents easy recognition by sequence homology. MRPS18A (mitochondrial ribosomal protein S18A) encodes a 28S subunit protein that belongs to the ribosomal protein S18P family. The encoded protein is one of three that has significant sequence similarity to bacterial S18 proteins. The primary sequences of the three human mitochondrial S18 proteins are no more closely related to each other than they are to the prokaryotic S18 proteins. A pseudogene corresponding to MRPS18A is found on chromosome 3p. Alternative splicing results in multiple transcript variants.

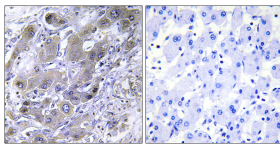
Recommended Dilution

IHC: 1: 100 - 1: 300

ELISA: 1: 40000

Not yet tested in other applications.

Images



Immunohistochemistry analysis of paraffin-embedded human liver carcinoma tissue, using MRPS18A Antibody. The picture on the right is blocked with the synthesized peptide.

Storage

-20°C for one year