

MRP-S22 Polyclonal Antibody

Description

Product type	Primary Antibody
Code	BT-AP05607
Host	Rabbit
Isotype	IgG
Size	20ul, 50ul, 100ul
Immunogen	The antiserum was produced against synthesized peptide derived from human MRPS22. AA range:231-280
Mol wt	41280
Species reactivity	Human, Monkey
Clonality	Polyclonal
Recommended application	WB, IHC-p, IF, ELISA
Concentration	1 mg/ml
Full name	MRP-S22 Antibody
Synonyms	MRPS22; C3orf5; RPMS22; GK002; 28S ribosomal protein S22; mitochondrial; MRP-S22; S22mt

This product is for research use only, not for use in human, therapeutic or diagnostic procedure.

Background

28S ribosomal protein S22 mitochondrial (mitochondrial ribosomal protein S22) is encoded by nuclear genes MRPS22 and help in protein synthesis within the mitochondrion. Mitochondrial ribosomes (mitoribosomes) consist of a small 28S subunit and a large 39S subunit. They have an estimated 75% protein to rRNA composition compared to prokaryotic ribosomes, where this ratio is reversed. Another difference between mammalian mitoribosomes and prokaryotic ribosomes is that the latter contain a 5S rRNA. Among different species, the proteins comprising the mitoribosome differ greatly in sequence, and sometimes in biochemical properties, which prevents easy recognition by sequence homology. This gene encodes a 28S subunit protein that does not seem to have a counterpart in prokaryotic and fungal-mitochondrial ribosomes. This gene lies telomeric of and is transcribed in the opposite direction from the forkhead box L2 gene. A pseudogene corresponding to this gene is found on chromosome Xq.

Recommended Dilution

WB: 1: 500 - 1: 2000

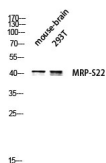
IHC: 1: 100 - 1: 300

IF: 1: 200 - 1: 1000

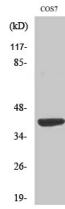
ELISA: 1: 40000

Not yet tested in other applications.

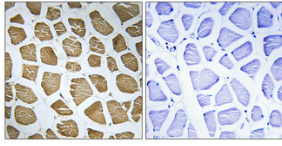
Images



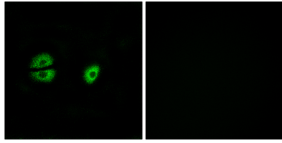
Western blot analysis of mouse-brain 293T lysis using MRP-S22 antibody.



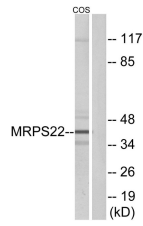
Western Blot analysis of various cells using MRP-S22 Polyclonal Antibody



Immunohistochemical analysis of paraffin-embedded Human skeletal muscle. Antibody was diluted at 1:100(4° overnight). High-pressure and temperature Tris-EDTA,pH8.0 was used for antigen retrieval. Negative contrl (right) obtained from antibody was pre-absorbed by immunogen peptide.



Immunofluorescence analysis of A549 cells, using MRPS22 Antibody. The picture on the right is blocked with the synthesized peptide.



Western blot analysis of lysates from COS cells, using MRPS22 Antibody. The lane on the right is blocked with the synthesized peptide.

Storage

-20°C for one year

501 Changsheng S Rd, Nanhu Dist, Jiaxing, Zhejiang, China
 Tel: 86 21 31007137 | E-mail: save@bt-laboratory.com | www.bt-laboratory.com