

MRP-S34 Polyclonal Antibody

Description

Product type	Primary Antibody
Code	BT-AP05614
Host	Rabbit
Isotype	IgG
Size	20ul, 50ul, 100ul
Immunogen	The antiserum was produced against synthesized peptide derived from human MRPS34. AA range:169-218
Mol wt	25650
Species reactivity	Human, Mouse
Clonality	Polyclonal
Recommended application	WB, ELISA
Concentration	1 mg/ml
Full name	MRP-S34 Antibody
Synonyms	MRPS34; 28S ribosomal protein S34; mitochondrial; MRP-S34; S34mt

This product is for research use only, not for use in human, therapeutic or diagnostic procedure.

Background

28S ribosomal protein S34 mitochondrial (mitochondrial ribosomal protein S34) is encoded by nuclear genes MRPS34 and help in protein synthesis within the mitochondrion. Mitochondrial ribosomes (mitoribosomes) consist of a small 28S subunit and a large 39S subunit. They have an estimated 75% protein to rRNA composition compared to prokaryotic ribosomes, where this ratio is reversed. Another difference between mammalian mitoribosomes and prokaryotic ribosomes is that the latter contain a 5S rRNA. Among different species, the proteins comprising the mitoribosome differ greatly in sequence, and sometimes in biochemical properties, which prevents easy recognition by sequence homology. This gene encodes a 28S subunit protein. Alternative splicing results in multiple transcript variants.

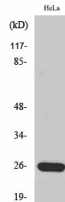
Recommended Dilution

WB: 1: 500 - 1: 2000

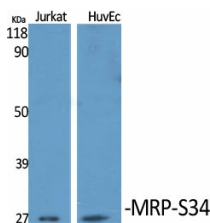
ELISA: 1: 10000

Not yet tested in other applications.

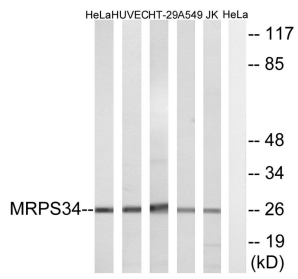
Images



Western Blot analysis of Jurkat cells using MRP-S34 Polyclonal Antibody diluted at 1:1000



Western Blot analysis of various cells using MRP-S34 Polyclonal Antibody diluted at 1:1000



Western blot analysis of lysates from HeLa, HUVEC, HT-29, A549, and Jurkat cells, using MRPS34 Antibody. The lane on the right is blocked with the synthesized peptide.

Storage

-20°C for one year

501 Changsheng S Rd, Nanhu Dist, Jiaxing, Zhejiang, China

Tel: 86 21 31007137 | E-mail: save@bt-laboratory.com | www.bt-laboratory.com