

MRP-S9 Polyclonal Antibody

Description

Product type	Primary Antibody
Code	BT-AP05619
Host	Rabbit
Isotype	IgG
Size	20ul, 50ul, 100ul
Immunogen	The antiserum was produced against synthesized peptide derived from human MRPS9. AA range:91-140
Mol wt	45823
Species reactivity	Human, Mouse, Rat
Clonality	Polyclonal
Recommended application	WB, IHC-p, ELISA
Concentration	1 mg/ml
Full name	MRP-S9 Antibody
Synonyms	MRPS9; RPMS9; 28S ribosomal protein S9; mitochondrial; MRP-S9; S9mt

This product is for research use only, not for use in human, therapeutic or diagnostic procedure.

Background

28S ribosomal protein S9 mitochondrial (mitochondrial ribosomal protein S9) is encoded by nuclear genes MRPS9 and help in protein synthesis within the mitochondrion. Mitochondrial ribosomes (mitoribosomes) consist of a small 28S subunit and a large 39S subunit. They have an estimated 75% protein to rRNA composition compared to prokaryotic ribosomes, where this ratio is reversed. Another difference between mammalian mitoribosomes and prokaryotic ribosomes is that the latter contain a 5S rRNA. Among different species, the proteins comprising the mitoribosome differ greatly in sequence, and sometimes in biochemical properties, which prevents easy recognition by sequence homology. This gene encodes a 28S subunit protein.

Recommended Dilution

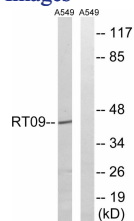
WB: 1: 500 - 1: 2000

IHC: 1: 100 - 1: 300

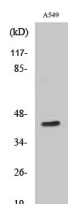
ELISA: 1: 40000

Not yet tested in other applications.

Images



Western blot analysis of lysates from A549 cells, using MRPS9 Antibody. The lane on the right is blocked with the synthesized peptide.



Western Blot analysis of various cells using MRP-S9 Polyclonal Antibody

Storage

-20°C for one year

501 Changsheng S Rd, Nanhu Dist, Jiaxing, Zhejiang, China

Tel: 86 21 31007137 | E-mail: save@bt-laboratory.com | www.bt-laboratory.com