

## MRRF Polyclonal Antibody

### Description

<b>Product type</b>	Primary Antibody
<b>Code</b>	BT-AP05620
<b>Host</b>	Rabbit
<b>Isotype</b>	IgG
<b>Size</b>	20ul, 50ul, 100ul
<b>Immunogen</b>	The antiserum was produced against synthesized peptide derived from human MRRF. AA range:181-230
<b>Mol wt</b>	29277
<b>Species reactivity</b>	Human, Mouse, Rat
<b>Clonality</b>	Polyclonal
<b>Recommended application</b>	WB, IHC-p, ELISA
<b>Concentration</b>	1 mg/ml
<b>Full name</b>	MRRF Antibody
<b>Synonyms</b>	MRRF; Ribosome-recycling factor; mitochondrial; RRF; Ribosome-releasing factor, mitochondrial

**This product is for research use only, not for use in human, therapeutic or diagnostic procedure.**

### Background

MRRF (Ribosome-recycling factor mitochondrial) is a Protein Coding gene. Diseases associated with MRRF include epidemic typhus and uremic neuropathy. Among its related pathways are Organelle biogenesis and maintenance and Mitochondrial translation. Responsible for the release of ribosomes from messenger RNA at the termination of protein biosynthesis. May increase the efficiency of translation by recycling ribosomes from one round of translation to another.

### Recommended Dilution

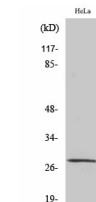
WB: 1: 500 - 1: 2000

IHC: 1: 100 - 1: 300

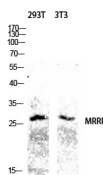
ELISA: 1: 20000

Not yet tested in other applications.

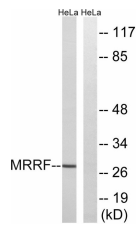
### Images



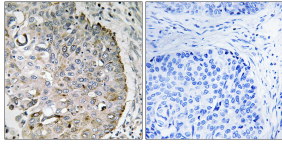
Western Blot analysis of various cells using MRRF Polyclonal Antibody diluted at 1:1000



Western blot analysis of 293T 3T3 lysis using MRRF antibody. Antibody was diluted at 1:1000



Western blot analysis of lysates from HeLa cells, using MRRF Antibody. The lane on the right is blocked with the synthesized peptide.



Immunohistochemistry analysis of paraffin-embedded human lung carcinoma tissue, using MRRF Antibody. The picture on the right is blocked with the synthesized peptide.

### Storage

-20°C for one year

501 Changsheng S Rd, Nanhu Dist, Jiaxing, Zhejiang, China

Tel: 86 21 31007137 | E-mail: [save@bt-laboratory.com](mailto:save@bt-laboratory.com) | [www.bt-laboratory.com](http://www.bt-laboratory.com)