

MSK2 Polyclonal Antibody

Description

Product type	Primary Antibody
Code	BT-AP05628
Host	Rabbit
Isotype	IgG
Size	20ul, 50ul, 100ul
Immunogen	The antiserum was produced against synthesized peptide derived from human MSK2. AA range:531-580
Mol wt	85606
Species reactivity	Human, Mouse
Clonality	Polyclonal
Recommended application	WB, IHC-p, ELISA
Concentration	1 mg/ml
Full name	MSK2 Antibody
Synonyms	RPS6KA4; MSK2; Ribosomal protein S6 kinase alpha-4; S6K-alpha-4; 90 kDa ribosomal protein S6 kinase 4; Nuclear mitogen- and stress-activated protein kinase 2; Ribosomal protein kinase B; RSKB

This product is for research use only, not for use in human, therapeutic or diagnostic procedure.

Background

RPS6KA4 (ribosomal protein S6 kinase A4) encodes a member of the RSK (ribosomal S6 kinase) family of serine/threonine kinases. This kinase contains 2 non-identical kinase catalytic domains and phosphorylates various substrates, including CREB1 and ATF1. The encoded protein can also phosphorylate histone H3 to regulate certain inflammatory genes. Several transcript variants encoding different isoforms have been found for RPS6KA4.

Recommended Dilution

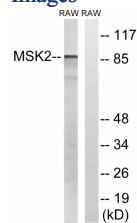
WB: 1: 500 - 1: 2000

IHC: 1: 100 - 1: 300

ELISA: 1: 5000

Not yet tested in other applications.

Images



Western blot analysis of lysates from Raw264.7 cells, treated with UV 5', using MSK2 Antibody. The lane on the right is blocked with the synthesized peptide.

Storage

-20°C for one year