

## ZKSC1 Rabbit Polyclonal Antibody

### Description

<b>Product type</b>	Primary Antibody
<b>Code</b>	BT-AP05630
<b>Host</b>	Rabbit
<b>Isotype</b>	IgG
<b>Size</b>	20ul, 50ul, 100ul
<b>Immunogen</b>	Synthesized peptide derived from human ZKSC1
<b>Mol wt</b>	N/A
<b>Species reactivity</b>	Human, Mouse, Rat
<b>Clonality</b>	Polyclonal
<b>Recommended application</b>	WB
<b>Concentration</b>	1 mg/ml
<b>Full name</b>	ZKSC1
<b>Synonyms</b>	ZKSC1; Zinc finger protein with KRAB and SCAN domains 1; Zinc finger protein 139; Zinc finger protein 36; Zinc finger protein KOX18

This product is for research use only, not for use in human, therapeutic or diagnostic procedure.

### Background

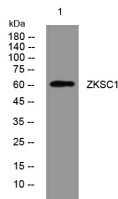
The ZKSCAN1 gene encodes a transcriptional regulator of the KRAB (Kruppel-associated box) subfamily of zinc finger proteins| which contain repeated Cys2-His2 (C2H2) zinc finger domains that are connected by conserved sequences| called H/C links (summarized by Tommerup and Vissing| 1995

### Recommended Dilution

WB: 1: 500 - 1: 2000

Not yet tested in other applications.

### Images



Western blot analysis of lysates from MCF-7 cells, primary antibody was diluted at 1:1000, 4°C overnight

### Storage

-20°C for 1 year