

Msx-2 Polyclonal Antibody

Description

Product type	Primary Antibody
Code	BT-AP05637
Host	Rabbit
Isotype	IgG
Size	20ul, 50ul, 100ul
Immunogen	Synthesized peptide derived from the Internal region of human Msx-2.
Mol wt	28867
Species reactivity	Human, Mouse
Clonality	Polyclonal
Recommended application	WB, IHC-p, ELISA
Concentration	1 mg/ml
Full name	Msx-2 Antibody
Synonyms	MSX2; HOX8; Homeobox protein MSX-2; Homeobox protein Hox-8

This product is for research use only, not for use in human, therapeutic or diagnostic procedure.

Background

MSX2 encodes a member of the muscle segment homeobox gene family. The encoded protein is a transcriptional repressor whose normal activity may establish a balance between survival and apoptosis of neural crest-derived cells required for proper craniofacial morphogenesis. The encoded protein may also have a role in promoting cell growth under certain conditions and may be an important target for the RAS signaling pathways. Mutations in MSX2 are associated with parietal foramina 1 and craniosynostosis type 2.

Recommended Dilution

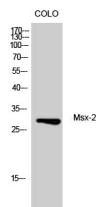
WB: 1: 500 - 1: 2000

IHC: 1: 100 - 1: 300

ELISA: 1: 20000

Not yet tested in other applications.

Images



Western Blot analysis of CoLo cells using Msx-2 Polyclonal Antibody

Storage

-20°C for one year