

MSY2 Polyclonal Antibody

Description

Product type	Primary Antibody
Code	BT-AP05638
Host	Rabbit
Isotype	IgG
Size	20ul, 50ul, 100ul
Immunogen	The antiserum was produced against synthesized peptide derived from human YBOX2. AA range:281-330
Mol wt	38518
Species reactivity	Human, Mouse
Clonality	Polyclonal
Recommended application	WB, IHC-p, IF, ELISA
Concentration	1 mg/ml
Full name	MSY2 Antibody
Synonyms	YBX2; CSDA3; MSY2; Y-box-binding protein 2; Contrin; DNA-binding protein C; Dbpc; Germ cell-specific Y-box-binding protein; MSY2 homolog

This product is for research use only, not for use in human, therapeutic or diagnostic procedure.

Background

YBX2 encodes a nucleic acid binding protein Y-box-binding protein 2 which is highly expressed in germ cells. Y-box-binding protein 2 binds to a Y-box element in the promoters of certain genes but also binds to mRNA transcribed from these genes. Pseudogenes for this gene are located on chromosome 10 and 15.

Recommended Dilution

WB: 1: 500 - 1: 2000

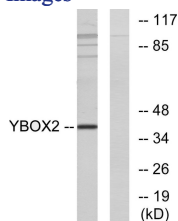
IHC: 1: 100 - 1: 300

IF: 1: 200 - 1: 1000

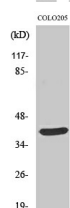
ELISA: 1: 10000

Not yet tested in other applications.

Images



Western blot analysis of lysates from COLO205 cells, using YBOX2 Antibody. The lane on the right is blocked with the synthesized peptide.



Western Blot analysis of various cells using MSY2 Polyclonal Antibody

Storage

-20°C for one year

501 Changsheng S Rd, Nanhu Dist, Jiaxing, Zhejiang, China

Tel: 86 21 31007137 | E-mail: save@bt-laboratory.com | www.bt-laboratory.com