

mtTFA Polyclonal Antibody

Description

Product type	Primary Antibody
Code	BT-AP05649
Host	Rabbit
Isotype	IgG
Size	20ul, 50ul, 100ul
Immunogen	The antiserum was produced against synthesized peptide derived from human TFAM. AA range:131-180
Mol wt	29097
Species reactivity	Human
Clonality	Polyclonal
Recommended application	WB, IHC-p, IF, ELISA
Concentration	1 mg/ml
Full name	mtTFA Antibody
Synonyms	TFAM; TCF6; TCF6L2; Transcription factor A; mitochondrial; mtTFA; Mitochondrial transcription factor 1; MtTF1; Transcription factor 6; TCF-6; Transcription factor 6-like 2

This product is for research use only, not for use in human, therapeutic or diagnostic procedure.

Background

TFAM (transcription factor A, mitochondrial) encodes a key mitochondrial transcription factor containing two high mobility group motifs. The encoded protein also functions in mitochondrial DNA replication and repair. Sequence polymorphisms in TFAM are associated with Alzheimer's and Parkinson's diseases. There are pseudogenes for TFAM on chromosomes 6, 7, and 11. Alternative splicing results in multiple transcript variants.

Recommended Dilution

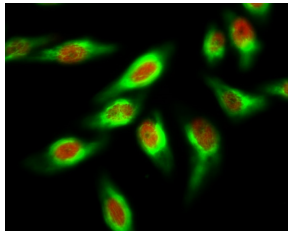
IHC: 1: 100 - 1: 300

IF: 1: 200 - 1: 1000

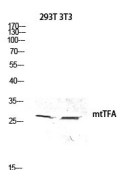
ELISA: 1: 20000

Not yet tested in other applications.

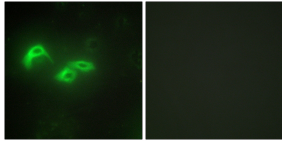
Images



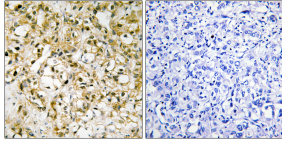
Immunofluorescence analysis of HeLa cell. 1,mtTFA Polyclonal Antibody(red) was diluted at 1:200(4° overnight). β -Tubulin Monoclonal Antibody(5G3)(green) was diluted at 1:200(4° overnight). 2, Goat Anti Rabbit Alexa Fluor 594 was diluted at 1:1000(room temperature, 50min). Goat Anti Mouse Alexa Fluor 488 was diluted at 1:1000(room temperature, 50min).



Western blot analysis of 293T 3T3 lysis using mtTFA antibody. Antibody was diluted at 1:500



Immunofluorescence analysis of HepG2 cells, using TFAM Antibody. The picture on the right is blocked with the synthesized peptide.



Immunohistochemistry analysis of paraffin-embedded human liver carcinoma tissue, using TFAM Antibody. The picture on the right is blocked with the synthesized peptide.

Storage

-20°C for one year

501 Changsheng S Rd, Nanhu Dist, Jiaxing, Zhejiang, China

Tel: 86 21 31007137 | E-mail: save@bt-laboratory.com | www.bt-laboratory.com