

Mucin 13 Polyclonal Antibody

Description

Product type	Primary Antibody
Code	BT-AP05661
Host	Rabbit
Isotype	IgG
Size	20ul, 50ul, 100ul
Immunogen	The antiserum was produced against synthesized peptide derived from human MUC13. AA range:421-470
Mol wt	54604
Species reactivity	Human
Clonality	Polyclonal
Recommended application	WB, IHC-p, IF, ELISA
Concentration	1 mg/ml
Full name	Mucin 13 Antibody
Synonyms	MUC13; DRCC1; RECC; Mucin-13; MUC-13; Down-regulated in colon cancer 1

This product is for research use only, not for use in human, therapeutic or diagnostic procedure.

Background

Epithelial mucins, such as MUC13, are a family of secreted and cell surface glycoproteins expressed by ductal and glandular epithelial tissues.

Recommended Dilution

WB: 1: 500 - 1: 2000

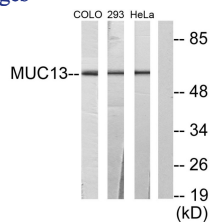
IHC: 1: 100 - 1: 300

IF: 1: 200 - 1: 1000

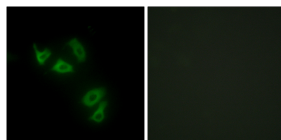
ELISA: 1: 20000

Not yet tested in other applications.

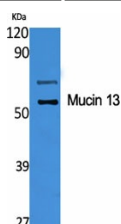
Images



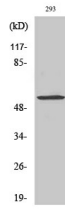
Western blot analysis of lysates from 293, HeLa, and COLO205 cells, using MUC13 Antibody. The lane on the right is blocked with the synthesized peptide.



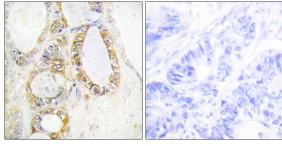
Immunofluorescence analysis of HepG2 cells, using MUC13 Antibody. The picture on the right is blocked with the synthesized peptide.



Western Blot analysis of various cells using Mucin 13 Polyclonal Antibody diluted at 1:1000



Western Blot analysis of COLO205 cells using Mucin 13 Polyclonal Antibody diluted at 1:1000



Immunohistochemistry analysis of paraffin-embedded human colon carcinoma tissue, using MUC13 Antibody. The picture on the right is blocked with the synthesized peptide.

Storage

-20°C for one year

501 Changsheng S Rd, Nanhu Dist, Jiaxing, Zhejiang, China

Tel: 86 21 31007137 | E-mail: save@bt-laboratory.com | www.bt-laboratory.com