

MUM1 Polyclonal Antibody

Description

Product type	Primary Antibody
Code	BT-AP05664
Host	Rabbit
Isotype	IgG
Size	20ul, 50ul, 100ul
Immunogen	The antiserum was produced against synthesized peptide derived from the C-terminal region of human MUM1. AA range:661-710
Mol wt	78636
Species reactivity	Human, Mouse, Rat
Clonality	Polyclonal
Recommended application	WB, ELISA
Concentration	1 mg/ml
Full name	MUM1 Antibody
Synonyms	melanoma associated antigen (mutated) 1

This product is for research use only, not for use in human, therapeutic or diagnostic procedure.

Background

DNA double-strand breaks (DSBs) are potentially hazardous lesions that can be induced by ionizing radiation (IR), radiomimetic chemicals, or DNA replication inhibitors. Melanoma associated antigen (mutated) 1 (MUM1, EXPAND1) is a PWWP-domain containing chromatin binding protein involved in maintaining chromatin architecture of interphase chromosomes. In response to DNA damage, EXPAND1/MUM1 accumulates at sites of DNA double strand breaks through direct interaction with DNA repair factor 53BP1. Accumulation of EXPAND1/MUM1 at damaged DNA sites is thought to modify the structure of the chromatin and allow access to other DNA repair factors. 53BP1 activates the checkpoint kinase ATM and promotes DNA double strand break repair via nonhomologous end joining (NHEJ) repair pathway.

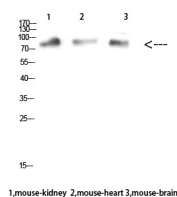
Recommended Dilution

WB: 1: 500 - 2000

ELISA: 1: 10000 - 20000

Not yet tested in other applications.

Images



Western Blot analysis of mouse-kidney mouse-heart mouse-brain cells using MUM1 Polyclonal Antibody diluted at 1:1000. Secondary antibody was diluted at 1:20000

Storage

-20°C for one year