

Musculin Polyclonal Antibody

Description

Product type	Primary Antibody
Code	BT-AP05665
Host	Rabbit
Isotype	IgG
Size	20ul, 50ul, 100ul
Immunogen	The antiserum was produced against synthesized peptide derived from human Musculin. AA range:131-180
Mol wt	22068
Species reactivity	Human, Mouse
Clonality	Polyclonal
Recommended application	WB, IHC-p, ELISA
Concentration	1 mg/ml
Full name	Musculin Antibody
Synonyms	MSC; ABF1; BHLHA22; Musculin; Activated B-cell factor 1; ABF-1; Class A basic helix-loop-helix protein 22; bHLHa22

This product is for research use only, not for use in human, therapeutic or diagnostic procedure.

Background

Musculin encoded by MSC is a transcriptional repressor capable of binding an E-box element either as a homodimer or as a heterodimer with E2A in vitro. Musculin also forms heterodimers with E2A proteins in vivo. Musculin is capable of inhibiting the transactivation capability of E47, an E2A protein, in mammalian cells. MSC is a downstream target of the B-cell receptor signal transduction pathway.

Recommended Dilution

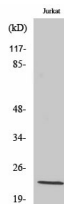
WB: 1: 500 - 1: 2000

IHC: 1: 100 - 1: 300

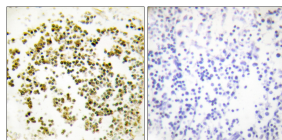
ELISA: 1: 10000

Not yet tested in other applications.

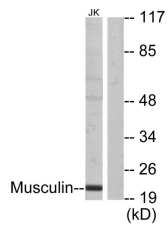
Images



Western Blot analysis of various cells using Musculin Polyclonal Antibody diluted at 1:2000 cells nucleus.



Immunohistochemistry analysis of paraffin-embedded human lymph node tissue, using Musculin Antibody. The picture on the right is blocked with the synthesized peptide.



Western blot analysis of lysates from Jurkat cells, using Musculin Antibody. The lane on the right is blocked with the synthesized peptide.

Storage

-20°C for one year

501 Changsheng S Rd, Nanhu Dist, Jiaxing, Zhejiang, China

Tel: 86 21 31007137 | E-mail: save@bt-laboratory.com | www.bt-laboratory.com