

MYBPC1 Polyclonal Antibody

Description

Product type	Primary Antibody
Code	BT-AP05674
Host	Rabbit
Isotype	IgG
Size	20ul, 50ul, 100ul
Immunogen	The antiserum was produced against synthesized peptide derived from human MYBPC1. AA range:218-267
Mol wt	128294
Species reactivity	Human, Mouse, Rat
Clonality	Polyclonal
Recommended application	WB, ELISA
Concentration	1 mg/ml
Full name	MYBPC1 Antibody
Synonyms	MYBPC1; MYBPCS; Myosin-binding protein C; slow-type; Slow MyBP-C; C-protein, skeletal muscle slow isoform

This product is for research use only, not for use in human, therapeutic or diagnostic procedure.

Background

MYBPC1 encodes a member of the myosin-binding protein C family. Myosin-binding protein C family members are myosin-associated proteins found in the cross-bridge-bearing zone (C region) of A bands in striated muscle. The encoded protein is the slow skeletal muscle isoform of myosin-binding protein C and plays an important role in muscle contraction by recruiting muscle-type creatine kinase to myosin filaments. Mutations in this gene are associated with distal arthrogryposis type I. Alternatively spliced transcript variants encoding multiple isoforms have been observed for this gene.

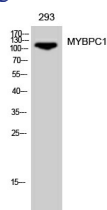
Recommended Dilution

WB: 1: 500 - 1: 2000

ELISA: 1: 20000

Not yet tested in other applications.

Images



Western Blot analysis of 293 cells using MYBPC1 Polyclonal Antibody diluted at 1:500

Storage

-20°C for one year