

## Myf-6 Polyclonal Antibody

### Description

<b>Product type</b>	Primary Antibody
<b>Code</b>	BT-AP05686
<b>Host</b>	Rabbit
<b>Isotype</b>	IgG
<b>Size</b>	20ul, 50ul, 100ul
<b>Immunogen</b>	The antiserum was produced against synthesized peptide derived from human MYF6. AA range:116-165
<b>Mol wt</b>	26953
<b>Species reactivity</b>	Human, Mouse, Rat
<b>Clonality</b>	Polyclonal
<b>Recommended application</b>	WB, IHC-p, ELISA
<b>Concentration</b>	1 mg/ml
<b>Full name</b>	Myf-6 Antibody
<b>Synonyms</b>	MYF6; BHLHC4; MRF4; Myogenic factor 6; Myf-6; Class C basic helix-loop-helix protein 4; bHLHc4; Muscle-specific regulatory factor 4

**This product is for research use only, not for use in human, therapeutic or diagnostic procedure.**

### Background

Myogenic factor 6 encoded by MYF6 is a probable basic helix-loop-helix (bHLH) DNA binding protein involved in muscle differentiation. The encoded protein likely acts as a heterodimer with another bHLH protein. Defects in this gene are a cause of autosomal dominant centronuclear myopathy (ADCNM). Diseases associated with MYF6 include myopathy, centronuclear, 3 and myopathy, centronuclear. Among its related pathways are Developmental Biology and CDO in myogenesis. Gene Ontology (GO) annotations related to this gene include transcription factor activity, sequence-specific DNA binding and RNA polymerase II core promoter proximal region sequence-specific DNA binding. An important paralog of this gene is MYOD1.

### Recommended Dilution

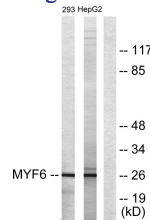
WB: 1: 500 - 1: 2000

IHC: 1: 100 - 1: 300

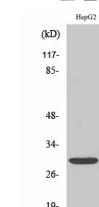
ELISA: 1: 20000

Not yet tested in other applications.

### Images



Western blot analysis of lysates from HepG2 and 293 cells, using MYF6 Antibody. The lane on the right is blocked with the synthesized peptide.



Western Blot analysis of various cells using Myf-6 Polyclonal Antibody diluted at 1:2000 cells nucleus.

## Storage

-20°C for one year

501 Changsheng S Rd, Nanhu Dist, Jiaxing, Zhejiang, China

Tel: 86 21 31007137 | E-mail: [save@bt-laboratory.com](mailto:save@bt-laboratory.com) | [www.bt-laboratory.com](http://www.bt-laboratory.com)