

MYH14 Polyclonal Antibody

Description

Product type	Primary Antibody
Code	BT-AP05690
Host	Rabbit
Isotype	IgG
Size	20ul, 50ul, 100ul
Immunogen	The antiserum was produced against synthesized peptide derived from human MYH14. AA range:1051-1100
Mol wt	228002
Species reactivity	Human, Mouse
Clonality	Polyclonal
Recommended application	WB, IHC-p, ELISA
Concentration	1 mg/ml
Full name	MYH14 Antibody
Synonyms	MYH14; KIAA2034; FP17425; Myosin-14; Myosin heavy chain 14; Myosin heavy chain; non-muscle IIc; Non-muscle myosin heavy chain IIc; NMHC II-C

This product is for research use only, not for use in human, therapeutic or diagnostic procedure.

Background

MYH14 encodes a member of the myosin superfamily. Myosin-14 represents a conventional non-muscle myosin; it should not be confused with the unconventional myosin-14 (MYO14). Myosins are actin-dependent motor proteins with diverse functions including regulation of cytokinesis, cell motility, and cell polarity. Mutations in this gene result in one form of autosomal dominant hearing impairment. Multiple transcript variants encoding different isoforms have been found for this gene.

Recommended Dilution

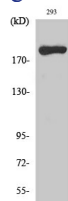
WB: 1: 500 - 1: 2000

IHC: 1: 100 - 1: 300

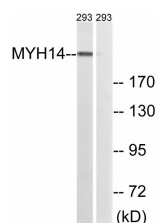
ELISA: 1: 5000

Not yet tested in other applications.

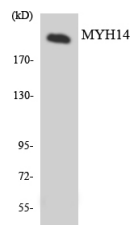
Images



Western Blot analysis of various cells using MYH14 Polyclonal Antibody diluted at 1:1000



Western blot analysis of lysates from 293 cells, using MYH14 Antibody. The lane on the right is blocked with the synthesized peptide.



Western blot analysis of the lysates from HeLa cells using MYH14 antibody.

Storage

-20°C for one year

501 Changsheng S Rd, Nanhu Dist, Jiaxing, Zhejiang, China

Tel: 86 21 31007137 | E-mail: save@bt-laboratory.com | www.bt-laboratory.com