

MYH15 Polyclonal Antibody

Description

Product type	Primary Antibody
Code	BT-AP05691
Host	Rabbit
Isotype	IgG
Size	20ul, 50ul, 100ul
Immunogen	The antiserum was produced against synthesized peptide derived from human MYH15. AA range:624-673
Mol wt	224611
Species reactivity	Human
Clonality	Polyclonal
Recommended application	WB, ELISA
Concentration	1 mg/ml
Full name	MYH15 Antibody
Synonyms	MYH15; KIAA1000; Myosin-15; Myosin heavy chain 15

This product is for research use only, not for use in human, therapeutic or diagnostic procedure.

Background

Muscle contraction.

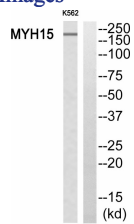
Recommended Dilution

WB: 1: 500 - 1: 2000

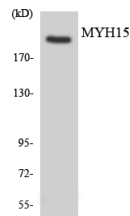
ELISA: 1: 40000

Not yet tested in other applications.

Images



Western blot analysis of the lysates from Jurkat cells using MYH15 antibody.



Western blot analysis of the lysates from Jurkat cells using MYH15 antibody.

Storage

-20°C for one year