

MYH4 Polyclonal Antibody

Description

Product type	Primary Antibody
Code	BT-AP05694
Host	Rabbit
Isotype	IgG
Size	20ul, 50ul, 100ul
Immunogen	The antiserum was produced against synthesized peptide derived from human MYH4. AA range:1677-1726
Mol wt	223013
Species reactivity	Human
Clonality	Polyclonal
Recommended application	IHC-p, ELISA
Concentration	1 mg/ml
Full name	MYH4 Antibody
Synonyms	MYH4; Myosin-4; Myosin heavy chain 2b; MyHC-2b; Myosin heavy chain 4; Myosin heavy chain IIb; MyHC-IIb; Myosin heavy chain; skeletal muscle, fetal

This product is for research use only, not for use in human, therapeutic or diagnostic procedure.

Background

MYH4 (Myosin, Heavy Chain 4, Skeletal Muscle) is a Protein Coding gene. Among its related pathways are Tight junction and Actin Nucleation by ARP-WASP Complex. GO annotations related to this gene include nucleotide binding and calmodulin binding. An important paralog of this gene is MYH1.

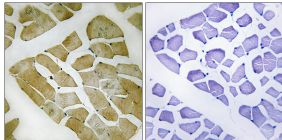
Recommended Dilution

IHC: 1: 100 - 1: 300

ELISA: 1: 5000

Not yet tested in other applications.

Images



Immunohistochemistry analysis of paraffin-embedded human skeletal muscle, using MYH4 Antibody. The picture on the right is blocked with the synthesized peptide.

Storage

-20°C for one year