

MYL3 Polyclonal Antibody

Description

Product type	Primary Antibody
Code	BT-AP05701
Host	Rabbit
Isotype	IgG
Size	20ul, 50ul, 100ul
Immunogen	The antiserum was produced against synthesized peptide derived from human MYL3. AA range:71-120
Mol wt	21932
Species reactivity	Human
Clonality	Polyclonal
Recommended application	WB, ELISA
Concentration	1 mg/ml
Full name	MYL3 Antibody
Synonyms	MYL3; Myosin light chain 3; Cardiac myosin light chain 1; CMLC1; Myosin light chain 1; slow-twitch muscle B/ventricular isoform; MLC1SB; Ventricular/slow twitch myosin alkali light chain

This product is for research use only, not for use in human, therapeutic or diagnostic procedure.

Background

MYL3 encodes myosin light chain 3, an alkali light chain also referred to in the literature as both the ventricular isoform and the slow skeletal muscle isoform. Mutations in MYL3 have been identified as a cause of mid-left ventricular chamber type hypertrophic cardiomyopathy.

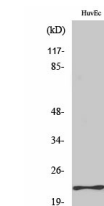
Recommended Dilution

WB: 1: 500 - 1: 2000

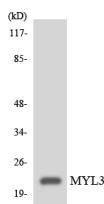
ELISA: 1: 20000

Not yet tested in other applications.

Images



Western Blot analysis of various cells using MYL3 Polyclonal Antibody



Western blot analysis of the lysates from HeLa cells using MYL3 antibody.

Storage

-20°C for one year

