

MYL6 Polyclonal Antibody

Description

Product type	Primary Antibody
Code	BT-AP05703
Host	Rabbit
Isotype	IgG
Size	20ul, 50ul, 100ul
Immunogen	Synthesized peptide derived from the Internal region of human MYL6.
Mol wt	16930
Species reactivity	Human, Mouse, Rat
Clonality	Polyclonal
Recommended application	WB, ELISA
Concentration	1 mg/ml
Full name	MYL6 Antibody
Synonyms	MYL6; Myosin light polypeptide 6; 17 kDa myosin light chain; LC17; Myosin light chain 3; MLC-3; Myosin light chain alkali 3; Myosin light chain A3; Smooth muscle and nonmuscle myosin light chain alkal

This product is for research use only, not for use in human, therapeutic or diagnostic procedure.

Background

Myosin light chain 6 is a hexameric ATPase cellular motor protein. It is composed of two heavy chains, two nonphosphorylatable alkali light chains, and two phosphorylatable regulatory light chains. This gene encodes a myosin alkali light chain that is expressed in smooth muscle and non-muscle tissues. Genomic sequences representing several pseudogenes have been described and two transcript variants encoding different isoforms have been identified for this gene.

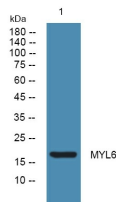
Recommended Dilution

WB: 1: 500 - 1: 2000

ELISA: 1: 5000

Not yet tested in other applications.

Images



Western blot analysis of lysates from Jarkat cells, primary antibody was diluted at 1:1000, 4°over night

Storage

-20°C for one year