

MYLIP Polyclonal Antibody

Description

Product type	Primary Antibody
Code	BT-AP05706
Host	Rabbit
Isotype	IgG
Size	20ul, 50ul, 100ul
Immunogen	The antiserum was produced against synthesized peptide derived from human MYLIP. AA range:161-210
Mol wt	49910
Species reactivity	Human, Mouse, Rat
Clonality	Polyclonal
Recommended application	WB, IHC-p, ELISA
Concentration	1 mg/ml
Full name	MYLIP Antibody
Synonyms	MYLIP; BZF1; IDOL; BM-023; PP5242; E3 ubiquitin-protein ligase MYLIP; Inducible degrader of the LDL-receptor; Idol; Myosin regulatory light chain interacting protein; MIR

This product is for research use only, not for use in human, therapeutic or diagnostic procedure.

Background

The ERM protein family members ezrin, radixin, and moesin are cytoskeletal effector proteins linking actin to membrane-bound proteins at the cell surface. Myosin regulatory light chain interacting protein (E3 ubiquitin-protein ligase MYLIP) is a novel ERM-like protein that interacts with myosin regulatory light chain and inhibits neurite outgrowth.

Recommended Dilution

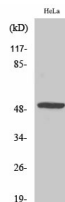
WB: 1: 500 - 1: 2000

IHC: 1: 100 - 1: 300

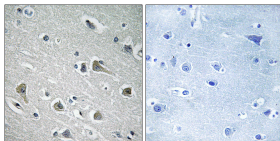
ELISA: 1: 20000

Not yet tested in other applications.

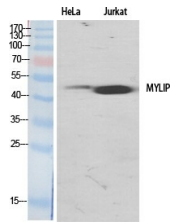
Images



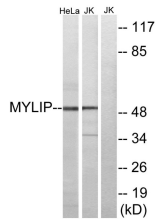
Western Blot analysis of Jurkat cells using MYLIP Polyclonal Antibody



Immunohistochemistry analysis of paraffin-embedded human brain tissue, using MYLIP Antibody.
The picture on the right is blocked with the synthesized peptide.



Western Blot analysis of various cells using MYLIP Polyclonal Antibody



Western blot analysis of lysates from HeLa and Jurkat cells, using MYLIP Antibody. The lane on the right is blocked with the synthesized peptide.

Storage

-20°C for one year

501 Changsheng S Rd, Nanhu Dist, Jiaxing, Zhejiang, China

Tel: 86 21 31007137 | E-mail: save@bt-laboratory.com | www.bt-laboratory.com