

Myoglobin Polyclonal Antibody

Description

Product type	Primary Antibody
Code	BT-AP05726
Host	Rabbit
Isotype	IgG
Size	20ul, 50ul, 100ul
Immunogen	Synthesized peptide derived from Myoglobin . at AA range: 40-120
Mol wt	17184
Species reactivity	Human
Clonality	Polyclonal
Recommended application	WB, ELISA
Concentration	1 mg/ml
Full name	Myoglobin Antibody
Synonyms	MB; Myoglobin

This product is for research use only, not for use in human, therapeutic or diagnostic procedure.

Background

MB encodes a member of the globin superfamily and is expressed in skeletal and cardiac muscles. The encoded protein is a haemoprotein contributing to intracellular oxygen storage and transcellular facilitated diffusion of oxygen. At least three alternatively spliced transcript variants encoding the same protein have been reported.

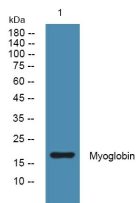
Recommended Dilution

WB: 1: 500 - 1: 2000

ELISA: 1: 5000

Not yet tested in other applications.

Images



Western blot analysis of lysates from A431 cells, primary antibody was diluted at 1:1000, 4°over night

Storage

-20°C for one year