

Myomesin-2 Polyclonal Antibody

Description

Product type	Primary Antibody
Code	BT-AP05728
Host	Rabbit
Isotype	IgG
Size	20ul, 50ul, 100ul
Immunogen	The antiserum was produced against synthesized peptide derived from human MYOM2. AA range:612-661
Mol wt	164794
Species reactivity	Human, Mouse, Monkey
Clonality	Polyclonal
Recommended application	WB, ELISA
Concentration	1 mg/ml
Full name	Myomesin-2 Antibody
Synonyms	MYOM2; Myomesin-2; 165 kDa connectin-associated protein; 165 kDa titin-associated protein; M-protein; Myomesin family member 2

This product is for research use only, not for use in human, therapeutic or diagnostic procedure.

Background

The giant protein titin, together with its associated proteins, interconnects the major structure of sarcomeres, the M bands and Z discs. The C-terminal end of the titin string extends into the M line, where it binds tightly to M-band constituents of apparent molecular masses of 190 kD and 165 kD. Myomesin-2 contains 1,465 amino acids. Like MYOM1, Myomesin-2 has a unique N-terminal domain followed by 12 repeat domains with strong homology to either fibronectin type III or immunoglobulin C2 domains. Protein sequence comparisons suggested that Myomesin-2 and bovine M protein are identical.

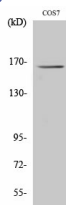
Recommended Dilution

WB: 1: 500 - 1: 2000

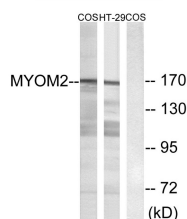
ELISA: 1: 40000

Not yet tested in other applications.

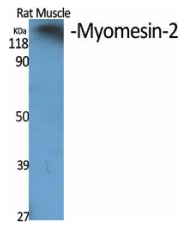
Images



Western Blot analysis of HT29 cells using Myomesin-2 Polyclonal Antibody diluted at 1:500



Western blot analysis of lysates from COS7 and HT-29 cells, using MYOM2 Antibody. The lane on the right is blocked with the synthesized peptide.



Western Blot analysis of various cells using Myomesin-2 Polyclonal Antibody diluted at 1:500

Storage

-20°C for one year

501 Changsheng S Rd, Nanhu Dist, Jiaxing, Zhejiang, China

Tel: 86 21 31007137 | E-mail: save@bt-laboratory.com | www.bt-laboratory.com