

Myotubularin Polyclonal Antibody

Description

Product type	Primary Antibody
Code	BT-AP05734
Host	Rabbit
Isotype	IgG
Size	20ul, 50ul, 100ul
Immunogen	The antiserum was produced against synthesized peptide derived from human Myotubularin. AA range:241-290
Mol wt	69932
Species reactivity	Human, Mouse
Clonality	Polyclonal
Recommended application	WB, ELISA
Concentration	1 mg/ml
Full name	Myotubularin Antibody
Synonyms	MTM1; CG2; Myotubularin

This product is for research use only, not for use in human, therapeutic or diagnostic procedure.

Background

MTM1 encodes a dual-specificity phosphatase that acts on both phosphotyrosine and phosphoserine. Myotubularin is required for muscle cell differentiation and mutations in MTM1 have been identified as being responsible for X-linked myotubular myopathy.

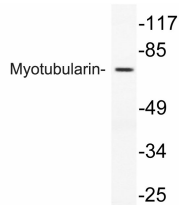
Recommended Dilution

WB: 1: 500 - 1: 2000

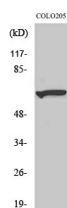
ELISA: 1: 10000

Not yet tested in other applications.

Images



Western blot analysis of lysate from COLO205 cells, using Myotubularin antibody.



Western Blot analysis of various cells using Myotubularin Polyclonal Antibody diluted at 1:500

Storage

-20°C for one year

