

## MYPT3 Polyclonal Antibody

### Description

<b>Product type</b>	Primary Antibody
<b>Code</b>	BT-AP05742
<b>Host</b>	Rabbit
<b>Isotype</b>	IgG
<b>Size</b>	20ul, 50ul, 100ul
<b>Immunogen</b>	The antiserum was produced against synthesized peptide derived from human PPP1R16A. AA range:362-411
<b>Mol wt</b>	57811
<b>Species reactivity</b>	Human
<b>Clonality</b>	Polyclonal
<b>Recommended application</b>	WB, ELISA
<b>Concentration</b>	1 mg/ml
<b>Full name</b>	MYPT3 Antibody
<b>Synonyms</b>	PPP1R16A; MYPT3; Protein phosphatase 1 regulatory subunit 16A; Myosin phosphatase-targeting subunit 3

This product is for research use only, not for use in human, therapeutic or diagnostic procedure.

### Background

Myosin light chain kinase and phosphatase (MLCP) complexes control the phosphorylation states of regulatory myosin light chains, which is crucial for muscle and intracellular movement. MLCPs typically contain a catalytic protein phosphatase 1 (PP1c) subunit, a myosin phosphatase targeting (MYPT) subunit, and another smaller subunit. The protein encoded by MYPT3 (protein phosphatase 1 regulatory subunit 16A, PPP1R16A) represents an MYPT subunit, which is responsible for directing PP1c to its intended targets. However, while other MYPTs result in PP1c activation after becoming phosphorylated, the encoded protein is phosphorylated by protein kinase A and then inhibits the catalytic activity of PP1c.

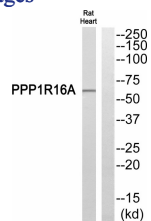
### Recommended Dilution

WB: 1: 500 - 1: 2000

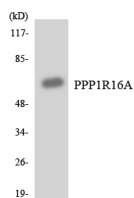
ELISA: 1: 5000

Not yet tested in other applications.

### Images



Western blot analysis of PPP1R16A Antibody. The lane on the right is blocked with the PPP1R16A peptide.



Western blot analysis of the lysates from HeLa cells using PPP1R16A antibody.

## Storage

-20°C for one year

501 Changsheng S Rd, Nanhu Dist, Jiaxing, Zhejiang, China

Tel: 86 21 31007137 | E-mail: [save@bt-laboratory.com](mailto:save@bt-laboratory.com) | [www.bt-laboratory.com](http://www.bt-laboratory.com)