

MYSM1 Polyclonal Antibody

Description

Product type	Primary Antibody
Code	BT-AP05743
Host	Rabbit
Isotype	IgG
Size	20ul, 50ul, 100ul
Immunogen	The antiserum was produced against synthesized peptide derived from human MYSM1. AA range:520-569
Mol wt	95032
Species reactivity	Human
Clonality	Polyclonal
Recommended application	WB, IHC-p, ELISA
Concentration	1 mg/ml
Full name	MYSM1 Antibody
Synonyms	MYSM1; KIAA1915; Histone H2A deubiquitinase MYSM1; 2A-DUB; Myb-like; SWIRM and MPN domain-containing protein 1

This product is for research use only, not for use in human, therapeutic or diagnostic procedure.

Background

MYSM1 (Myb Like, SWIRM And MPN Domains 1) is a Protein Coding gene. Metalloprotease that specifically deubiquitinates monoubiquitinated histone H2A, a specific tag for epigenetic transcriptional repression, thereby acting as a coactivator. Preferentially deubiquitinates monoubiquitinated H2A in hyperacetylated nucleosomes. Deubiquitination of histone H2A leads to facilitate the phosphorylation and dissociation of histone H1 from the nucleosome. Acts as a coactivator by participating in the initiation and elongation steps of androgen receptor (AR)-induced gene activation. Diseases associated with MYSM1 include hemorrhagic cystitis. Gene Ontology (GO) annotations related to this gene include chromatin binding and protein complex binding. An important paralog of this gene is MPND.

Recommended Dilution

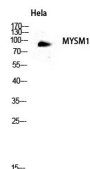
WB: 1: 500 - 1: 2000

IHC: 1: 100 - 1: 300

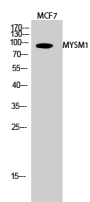
ELISA: 1: 40000

Not yet tested in other applications.

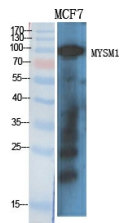
Images



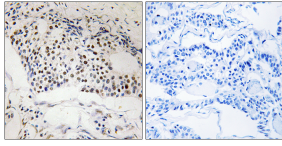
Western blot analysis of HeLa lysis using MYSM1 antibody. Antibody was diluted at 1:2000 cells nucleus.



Western Blot analysis of MCF7 cells using MYSM1 Polyclonal Antibody diluted at 1:2000 cells nucleus.



Western Blot analysis of various cells using MYSM1 Polyclonal Antibody diluted at 1:2000 cells nucleus.



Immunohistochemistry analysis of paraffin-embedded human breast carcinoma, using MYSM1 Antibody. The picture on the right is blocked with the synthesized peptide.

Storage

-20°C for one year

501 Changsheng S Rd, Nanhu Dist, Jiaxing, Zhejiang, China

Tel: 86 21 31007137 | E-mail: save@bt-laboratory.com | www.bt-laboratory.com