

Myt 1 Polyclonal Antibody

Description

Product type	Primary Antibody
Code	BT-AP05744
Host	Rabbit
Isotype	IgG
Size	20ul, 50ul, 100ul
Immunogen	The antiserum was produced against synthesized peptide derived from human PKMYT1. AA range:49-98
Mol wt	54521
Species reactivity	Human
Clonality	Polyclonal
Recommended application	WB, IHC-p, ELISA
Concentration	1 mg/ml
Full name	Myt 1 Antibody
Synonyms	PKMYT1; MYT1; Membrane-associated tyrosine- and threonine-specific cdc2-inhibitory kinase; Myt1 kinase

This product is for research use only, not for use in human, therapeutic or diagnostic procedure.

Background

PKMYT1 encodes a member of the serine/threonine protein kinase family. Membrane-associated tyrosine- and threonine-specific cdc2-inhibitory kinase is a membrane-associated kinase that negatively regulates the G2/M transition of the cell cycle by phosphorylating and inactivating cyclin-dependent kinase 1. The activity of the encoded protein is regulated by polo-like kinase 1. Alternatively spliced transcript variants encoding multiple isoforms have been observed for this gene.

Recommended Dilution

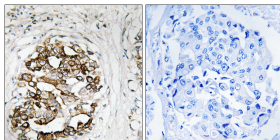
WB: 1: 500 - 1: 2000

IHC: 1: 100 - 1: 300

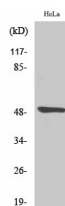
ELISA: 1: 20000

Not yet tested in other applications.

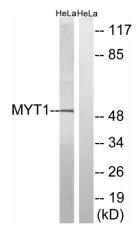
Images



Immunohistochemistry analysis of paraffin-embedded human breast carcinoma, using MYT1 Antibody. The picture on the right is blocked with the synthesized peptide.



Western Blot analysis of various cells using Myt 1 Polyclonal Antibody diluted at 1:2000



Storage

-20°C for one year

501 Changsheng S Rd, Nanhu Dist, Jiaxing, Zhejiang, China

Tel: 86 21 31007137 | E-mail: save@bt-laboratory.com | www.bt-laboratory.com