

## MZF-1 Polyclonal Antibody

### Description

<b>Product type</b>	Primary Antibody
<b>Code</b>	BT-AP05745
<b>Host</b>	Rabbit
<b>Isotype</b>	IgG
<b>Size</b>	20ul, 50ul, 100ul
<b>Immunogen</b>	The antiserum was produced against synthesized peptide derived from human MZF-1. AA range:1-50
<b>Mol wt</b>	82036
<b>Species reactivity</b>	Human
<b>Clonality</b>	Polyclonal
<b>Recommended application</b>	WB, IHC-p, ELISA
<b>Concentration</b>	1 mg/ml
<b>Full name</b>	MZF-1 Antibody
<b>Synonyms</b>	MZF1; MZF; ZNF42; ZSCAN6; Myeloid zinc finger 1; MZF-1; Zinc finger and SCAN domain-containing protein 6; Zinc finger protein 42

**This product is for research use only, not for use in human, therapeutic or diagnostic procedure.**

### Background

MZF1 is a Protein Coding gene. Myeloid Zinc Finger 1 binds to target promoter DNA and functions as transcription regulator. Regulates transcription from the PADI1 and CDH2 promoter. May be one regulator of transcriptional events during hemopoietic development. Gene Ontology (GO) annotations related to MZF1 include transcription factor activity, sequence-specific DNA binding and RNA polymerase II core promoter proximal region sequence-specific DNA binding. An important paralog of this gene is ZSCAN10.

### Recommended Dilution

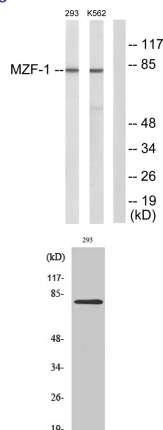
WB: 1: 500 - 1: 2000

IHC: 1: 100 - 1: 300

ELISA: 1: 10000

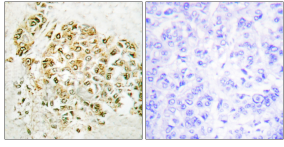
Not yet tested in other applications.

### Images



Western blot analysis of lysates from 293 and K562 cells, using MZF-1 Antibody. The lane on the right is blocked with the synthesized peptide.

Western Blot analysis of various cells using MZF-1 Polyclonal Antibody diluted at 1:2000 cells nucleus.



Immunohistochemistry analysis of paraffin-embedded human breast carcinoma tissue, using MZF-1 Antibody. The picture on the right is blocked with the synthesized peptide.

### Storage

-20°C for one year

501 Changsheng S Rd, Nanhu Dist, Jiaxing, Zhejiang, China

Tel: 86 21 31007137 | E-mail: [save@bt-laboratory.com](mailto:save@bt-laboratory.com) | [www.bt-laboratory.com](http://www.bt-laboratory.com)