

NARFL Polyclonal Antibody

Description

Product type	Primary Antibody
Code	BT-AP05781
Host	Rabbit
Isotype	IgG
Size	20ul, 50ul, 100ul
Immunogen	The antiserum was produced against synthesized peptide derived from human NARFL. AA range:387-436
Mol wt	53020
Species reactivity	Human
Clonality	Polyclonal
Recommended application	WB, IHC-p, ELISA
Concentration	1 mg/ml
Full name	NARFL Antibody
Synonyms	NARFL; PRN; Cytosolic Fe-S cluster assembly factor NARFL; Iron-only hydrogenase-like protein 1; IOP1; Nuclear prelamin A recognition factor-like protein; Protein related to Narf

This product is for research use only, not for use in human, therapeutic or diagnostic procedure.

Background

NARFL is a Protein Coding gene. Component of the cytosolic iron-sulfur protein assembly (CIA) complex, a multiprotein complex that mediates the incorporation of iron-sulfur cluster into extramitochondrial Fe/S proteins. Seems to negatively regulate the level of HIF1A expression, although this effect could be indirect. Among its related pathways are Metabolism and Cytosolic iron-sulfur cluster assembly. Gene Ontology (GO) annotations related to this gene include 4 iron, 4 sulfur cluster binding and NADH dehydrogenase activity. An important paralog of this gene is NARF.

Recommended Dilution

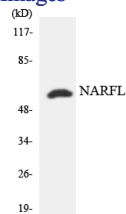
WB: 1: 500 - 1: 2000

IHC: 1: 100 - 1: 300

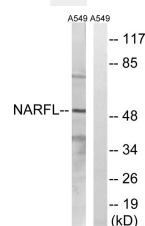
ELISA: 1: 40000

Not yet tested in other applications.

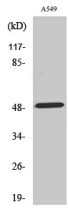
Images



Western blot analysis of the lysates from HeLa cells using NARFL antibody.



Western blot analysis of lysates from A549 cells, using NARFL Antibody. The lane on the right is blocked with the synthesized peptide.



Western Blot analysis of various cells using NARFL Polyclonal Antibody cells nucleus.

Storage

-20°C for one year

501 Changsheng S Rd, Nanhu Dist, Jiaxing, Zhejiang, China

Tel: 86 21 31007137 | E-mail: save@bt-laboratory.com | www.bt-laboratory.com