

NBEAL1 Polyclonal Antibody

Description

Product type	Primary Antibody
Code	BT-AP05788
Host	Rabbit
Isotype	IgG
Size	20ul, 50ul, 100ul
Immunogen	The antiserum was produced against synthesized peptide derived from human NBEAL1. AA range:566-615
Mol wt	150705
Species reactivity	Human
Clonality	Polyclonal
Recommended application	WB, IHC-p, ELISA
Concentration	1 mg/ml
Full name	NBEAL1 Antibody
Synonyms	NBEAL1; ALS2CR16; ALS2CR17; Neurobeachin-like protein 1; Amyotrophic lateral sclerosis 2 chromosomal region candidate gene 16 protein; Amyotrophic lateral sclerosis 2 chromosomal region candidate gene

This product is for research use only, not for use in human, therapeutic or diagnostic procedure.

Background

NBEAL1 (neurobeachin-like 1), also known as ALS2CR16 (amyotrophic lateral sclerosis 2 chromosomal region candidate gene 16 protein) or ALS2CR17, is a 2694 amino acid protein that belongs to the WD repeat Neurobeachin family. While highly expressed in kidney, brain, prostate and testis, NBEAL1 is also found at low levels in peripheral blood leukocytes, small intestine, ovary and colon. NBEAL1 contains one BEACH domain and two WD repeats, and undergoes alternative splicing to produce two isoforms. NBEAL2 (neurobeachin-like protein 2), also known as GPS or BDPLT4, is a 2754 amino acid protein that belongs to the WD repeat neurobeachin family. Existing as four alternatively spliced isoforms, NBEAL2 contains one BEACH domain and five WD repeats. NBEAL2 is thought to play a role in α -granule biogenesis in megakaryocytes and is encoded by a gene that maps to human chromosome 3p21.1.

Recommended Dilution

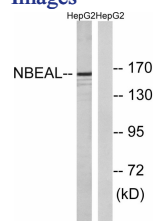
WB: 1: 500 - 1: 2000

IHC: 1: 100 - 1: 300

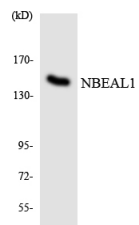
ELISA: 1: 10000

Not yet tested in other applications.

Images



Western blot analysis of lysates from HepG2 cells, using NBEAL1 Antibody. The lane on the right is blocked with the synthesized peptide.



Western blot analysis of the lysates from HeLa cells using NBEAL1 antibody.

Storage

-20°C for one year

501 Changsheng S Rd, Nanhu Dist, Jiaxing, Zhejiang, China

Tel: 86 21 31007137 | E-mail: save@bt-laboratory.com | www.bt-laboratory.com