

NBPF5 Polyclonal Antibody

Description

Product type	Primary Antibody
Code	BT-AP05793
Host	Rabbit
Isotype	IgG
Size	20ul, 50ul, 100ul
Immunogen	The antiserum was produced against synthesized peptide derived from human NBPF5. AA range:302-351
Mol wt	40546
Species reactivity	Human
Clonality	Polyclonal
Recommended application	WB, IHC-p, ELISA
Concentration	1 mg/ml
Full name	NBPF5 Antibody
Synonyms	NBPF5; Neuroblastoma breakpoint family member 5

This product is for research use only, not for use in human, therapeutic or diagnostic procedure.

Background

NBPF5 (neuroblastoma breakpoint family member 5) is a 351 amino acid cytoplasmic protein that is expressed in medulla and brain and belongs to the NBPF family. NBPF5 contains one NBPF domain and is encoded by a gene that maps to human chromosome 1p13. Chromosome 1 spans 260 million base pairs, contains over 3000 genes and comprises nearly 8% of the human genome. Chromosome 1 houses a large number of disease-associated genes, including those that are involved in familial adenomatous polyposis, Stickler syndrome, Parkinson's disease, Gaucher disease, schizophrenia and Usher syndrome. Aberrations in chromosome 1 are found in a variety of cancers, including head and neck cancer, malignant melanoma and multiple myeloma.

Recommended Dilution

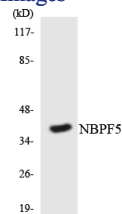
WB: 1: 500 - 1: 2000

IHC: 1: 100 - 1: 300

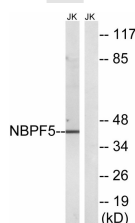
ELISA: 1: 10000

Not yet tested in other applications.

Images



Western blot analysis of the lysates from K562 cells using NBPF5 antibody.



Western blot analysis of lysates from Jurkat cells, using NBPF5 Antibody. The lane on the right is blocked with the synthesized peptide.

Storage

-20°C for one year

501 Changsheng S Rd, Nanhu Dist, Jiaxing, Zhejiang, China

Tel: 86 21 31007137 | E-mail: save@bt-laboratory.com | www.bt-laboratory.com