

NCAM2 Polyclonal Antibody

Description

Product type	Primary Antibody
Code	BT-AP05799
Host	Rabbit
Isotype	IgG
Size	20ul, 50ul, 100ul
Immunogen	The antiserum was produced against synthesized peptide derived from human NCAM2. AA range:264-313
Mol wt	92932
Species reactivity	Human, Mouse, Rat
Clonality	Polyclonal
Recommended application	WB, ELISA
Concentration	1 mg/ml
Full name	NCAM2 Antibody
Synonyms	NCAM2; NCAM21; Neural cell adhesion molecule 2; N-CAM-2; NCAM-2

This product is for research use only, not for use in human, therapeutic or diagnostic procedure.

Background

The protein encoded by NCAM2 belongs to the immunoglobulin superfamily. It is a type I membrane protein and may function in selective fasciculation and zone-to-zone projection of the primary olfactory axons.

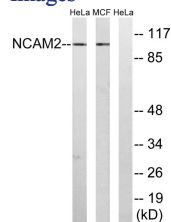
Recommended Dilution

WB: 1: 500 - 1: 2000

ELISA: 1: 40000

Not yet tested in other applications.

Images



Western blot analysis of lysates from MCF-7 and HeLa cells, using NCAM2 Antibody. The lane on the right is blocked with the synthesized peptide.

Storage

-20°C for one year