

NCAM-L1 Polyclonal Antibody

Description

Product type	Primary Antibody
Code	BT-AP05801
Host	Rabbit
Isotype	IgG
Size	20ul, 50ul, 100ul
Immunogen	Synthetic peptide from human protein at AA range: 151-200
Mol wt	140003
Species reactivity	Human, Mouse, Rat
Clonality	Polyclonal
Recommended application	IHC-p, ELISA
Concentration	1 mg/ml
Full name	NCAM-L1 Antibody
Synonyms	Neural cell adhesion molecule L1 (N-CAM-L1) (NCAM-L1) (CD antigen CD171)

This product is for research use only, not for use in human, therapeutic or diagnostic procedure.

Background

The protein encoded by L1CAM is an axonal glycoprotein belonging to the immunoglobulin supergene family. The ectodomain, consisting of several immunoglobulin-like domains and fibronectin-like repeats (type III), is linked via a single transmembrane sequence to a conserved cytoplasmic domain. This cell adhesion molecule plays an important role in nervous system development, including neuronal migration and differentiation. Mutations in the gene cause X-linked neurological syndromes known as CRASH (corpus callosum hypoplasia, retardation, aphasia, spastic paraplegia and hydrocephalus). Alternative splicing of L1CAM results in multiple transcript variants, some of which include an alternate exon that is considered to be specific to neurons.

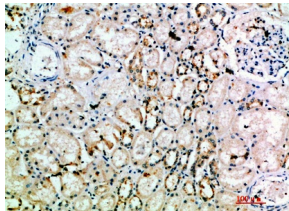
Recommended Dilution

IHC-p: 1: 50 - 200

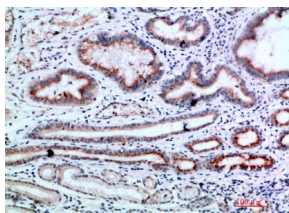
ELISA: 1: 10000 - 20000

Not yet tested in other applications.

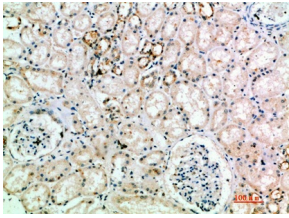
Images



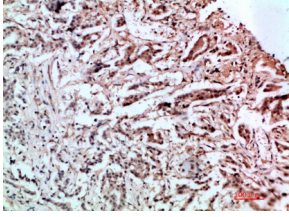
Immunohistochemical analysis of paraffin-embedded human-kidney, antibody was diluted at 1:200



Immunohistochemical analysis of paraffin-embedded human-stomach-cancer, antibody was diluted at 1:200



Immunohistochemical analysis of paraffin-embedded human-kidney, antibody was diluted at 1:200



Immunohistochemical analysis of paraffin-embedded human-stomach-cancer, antibody was diluted at 1:200

Storage

-20°C for one year

501 Changsheng S Rd, Nanhu Dist, Jiaxing, Zhejiang, China

Tel: 86 21 31007137 | E-mail: save@bt-laboratory.com | www.bt-laboratory.com