

NCKX1 Polyclonal Antibody

Description

Product type	Primary Antibody
Code	BT-AP05804
Host	Rabbit
Isotype	IgG
Size	20ul, 50ul, 100ul
Immunogen	The antiserum was produced against synthesized peptide derived from human SLC24A1. AA range:154-203
Mol wt	121374
Species reactivity	Human
Clonality	Polyclonal
Recommended application	WB, ELISA
Concentration	1 mg/ml
Full name	NCKX1 Antibody
Synonyms	SLC24A1; KIAA0702; NCKX1; Sodium/potassium/calcium exchanger 1; Na(+)/K(+)/Ca(2+)-exchange protein 1; Retinal rod Na-Ca+K exchanger

This product is for research use only, not for use in human, therapeutic or diagnostic procedure.

Background

SLC24A1 (solute carrier family 24 member 1) encodes a member of the potassium-dependent sodium/calcium exchanger protein family. The encoded protein plays an important role in sodium/calcium exchange in retinal rod and cone photoreceptors by mediating the extrusion of one calcium ion and one potassium ion in exchange for four sodium ions. Mutations in SLC24A1 may play a role in congenital stationary night blindness. Alternatively spliced transcript variants encoding multiple isoforms have been observed for SLC24A1.

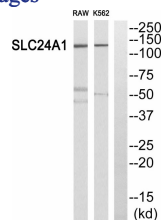
Recommended Dilution

WB: 1: 500 - 1: 2000

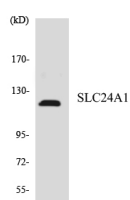
ELISA: 1: 10000

Not yet tested in other applications.

Images



Western blot analysis of SLC24A1 Antibody. The lane on the right is blocked with the SLC24A1 peptide.



Western blot analysis of the lysates from HepG2 cells using SLC24A1 antibody.

Storage

-20°C for one year

501 Changsheng S Rd, Nanhu Dist, Jiaxing, Zhejiang, China

Tel: 86 21 31007137 | E-mail: save@bt-laboratory.com | www.bt-laboratory.com