

NCKX3 Polyclonal Antibody

Description

Product type	Primary Antibody
Code	BT-AP05806
Host	Rabbit
Isotype	IgG
Size	20ul, 50ul, 100ul
Immunogen	The antiserum was produced against synthesized peptide derived from human SLC24A3. AA range:354-403
Mol wt	71992
Species reactivity	Human, Mouse, Rat
Clonality	Polyclonal
Recommended application	WB, ELISA
Concentration	1 mg/ml
Full name	NCKX3 Antibody
Synonyms	SLC24A3; NCKX3; Sodium/potassium/calcium exchanger 3; Na(+)/K(+)/Ca(2+)-exchange protein 3; Solute carrier family 24 member 3

This product is for research use only, not for use in human, therapeutic or diagnostic procedure.

Background

Plasma membrane sodium/calcium exchangers are an important component of intracellular calcium homeostasis and electrical conduction. Potassium-dependent sodium/calcium exchangers such as SLC24A3 are believed to transport 1 intracellular calcium and 1 potassium ion in exchange for 4 extracellular sodium ions.

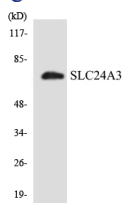
Recommended Dilution

WB: 1: 500 - 1: 2000

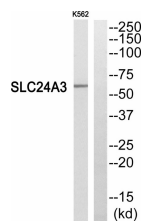
ELISA: 1: 20000

Not yet tested in other applications.

Images



Western blot analysis of the lysates from K562 cells using SLC24A3 antibody.



Western blot analysis of SLC24A3 Antibody. The lane on the right is blocked with the SLC24A3 peptide.

Storage

-20°C for one year

501 Changsheng S Rd, Nanhu Dist, Jiaxing, Zhejiang, China

Tel: 86 21 31007137 | E-mail: save@bt-laboratory.com | www.bt-laboratory.com