

NCKX4 Polyclonal Antibody

Description

Product type	Primary Antibody
Code	BT-AP05807
Host	Rabbit
Isotype	IgG
Size	20ul, 50ul, 100ul
Immunogen	The antiserum was produced against synthesized peptide derived from human SLC24A4. AA range:328-377
Mol wt	66951
Species reactivity	Human, Mouse, Rat
Clonality	Polyclonal
Recommended application	WB, ELISA
Concentration	1 mg/ml
Full name	NCKX4 Antibody
Synonyms	SLC24A4; NCKX4; Sodium/potassium/calcium exchanger 4; Na(+)/K(+)/Ca(2+)-exchange protein 4; Solute carrier family 24 member 4

This product is for research use only, not for use in human, therapeutic or diagnostic procedure.

Background

SLC24A4 encodes a member of the potassium-dependent sodium/calcium exchanger protein family. Alternative splicing results in multiple transcript variants.

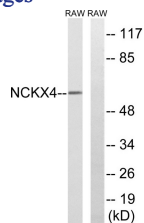
Recommended Dilution

WB: 1: 500 - 1: 2000

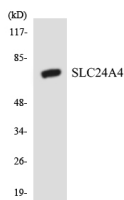
ELISA: 1: 40000

Not yet tested in other applications.

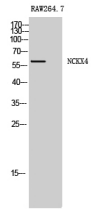
Images



Western blot analysis of lysates from RAW264.7 cells, using SLC24A4 Antibody. The lane on the right is blocked with the synthesized peptide.



Western blot analysis of the lysates from HeLa cells using SLC24A4 antibody.



Western Blot analysis of RAW264.7 cells using NCKX4 Polyclonal Antibody

Storage

-20°C for one year

501 Changsheng S Rd, Nanhu Dist, Jiaxing, Zhejiang, China

Tel: 86 21 31007137 | E-mail: save@bt-laboratory.com | www.bt-laboratory.com