

ND1 Polyclonal Antibody

Description

Product type	Primary Antibody
Code	BT-AP05818
Host	Rabbit
Isotype	IgG
Size	20ul, 50ul, 100ul
Immunogen	The antiserum was produced against synthesized peptide derived from human MT-ND1. AA range:176-225
Mol wt	35661
Species reactivity	Human
Clonality	Polyclonal
Recommended application	WB, IHC-p, ELISA
Concentration	1 mg/ml
Full name	ND1 Antibody
Synonyms	MT-ND1; MTND1; NADH1; ND1; NADH-ubiquinone oxidoreductase chain 1; NADH dehydrogenase subunit 1

This product is for research use only, not for use in human, therapeutic or diagnostic procedure.

Background

MT-ND1 is a Protein Coding gene. Core subunit of the mitochondrial membrane respiratory chain NADH dehydrogenase (Complex I) that is believed to belong to the minimal assembly required for catalysis. Complex I functions in the transfer of electrons from NADH to the respiratory chain. The immediate electron acceptor for the enzyme is believed to be ubiquinone. Diseases associated with MT-ND1 include melas syndrome and leber hereditary optic neuropathy. Among its related pathways are Metabolism and Respiratory electron transport, ATP synthesis by chemiosmotic coupling, and heat production by uncoupling proteins. Gene Ontology (GO) annotations related to this gene include NADH dehydrogenase (ubiquinone) activity.

Recommended Dilution

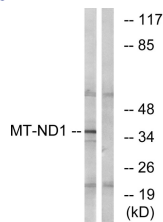
WB: 1: 500 - 1: 2000

IHC: 1: 100 - 1: 300

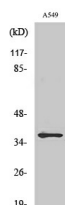
ELISA: 1: 40000

Not yet tested in other applications.

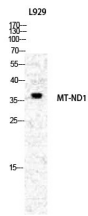
Images



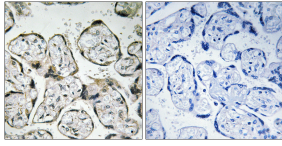
Western blot analysis of lysates from Jurkat cells, using MT-ND1 Antibody. The lane on the right is blocked with the synthesized peptide.



Western Blot analysis of COLO205 cells using ND1 Polyclonal Antibody diluted at 1:1000



Western Blot analysis of various cells using ND1 Polyclonal Antibody diluted at 1:1000



Immunohistochemistry analysis of paraffin-embedded human placenta tissue, using MT-ND1 Antibody. The picture on the right is blocked with the synthesized peptide.

Storage

-20°C for one year

501 Changsheng S Rd, Nanhu Dist, Jiaxing, Zhejiang, China

Tel: 86 21 31007137 | E-mail: save@bt-laboratory.com | www.bt-laboratory.com