

ND5 Polyclonal Antibody

Description

Product type	Primary Antibody
Code	BT-AP05819
Host	Rabbit
Isotype	IgG
Size	20ul, 50ul, 100ul
Immunogen	The antiserum was produced against synthesized peptide derived from human MT-ND5. AA range:328-377
Mol wt	67027
Species reactivity	Human
Clonality	Polyclonal
Recommended application	WB, ELISA
Concentration	1 mg/ml
Full name	ND5 Antibody
Synonyms	MT-ND5; MTND5; NADH5; ND5; NADH-ubiquinone oxidoreductase chain 5; NADH dehydrogenase subunit 5

This product is for research use only, not for use in human, therapeutic or diagnostic procedure.

Background

MT-ND5 is a Protein Coding gene. Core subunit of the mitochondrial membrane respiratory chain NADH dehydrogenase (Complex I) that is believed to belong to the minimal assembly required for catalysis. Complex I functions in the transfer of electrons from NADH to the respiratory chain. The immediate electron acceptor for the enzyme is believed to be ubiquinone. Diseases associated with MT-ND5 include leber hereditary optic neuropathy and melas syndrome. Among its related pathways are Metabolism and Respiratory electron transport, ATP synthesis by chemiosmotic coupling, and heat production by uncoupling proteins. Gene Ontology (GO) annotations related to this gene include NADH dehydrogenase (ubiquinone) activity.

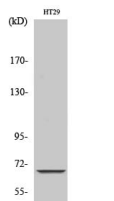
Recommended Dilution

WB: 1: 500 - 1: 2000

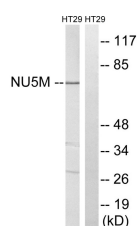
ELISA: 1: 10000

Not yet tested in other applications.

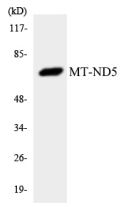
Images



Western Blot analysis of various cells using ND5 Polyclonal Antibody diluted at 1:1000



Western blot analysis of lysates from HT-29 cells, using MT-ND5 Antibody. The lane on the right is blocked with the synthesized peptide.



Western blot analysis of the lysates from Jurkat cells using MT-ND5 antibody.

Storage

-20°C for one year

501 Changsheng S Rd, Nanhu Dist, Jiaxing, Zhejiang, China

Tel: 86 21 31007137 | E-mail: save@bt-laboratory.com | www.bt-laboratory.com