

NDR2 Polyclonal Antibody

Description

Product type	Primary Antibody
Code	BT-AP05826
Host	Rabbit
Isotype	IgG
Size	20ul, 50ul, 100ul
Immunogen	Synthesized peptide derived from NDR2 . at AA range: 380-460
Mol wt	54003
Species reactivity	Human, Mouse, Rat
Clonality	Polyclonal
Recommended application	WB, IHC-p, ELISA
Concentration	1 mg/ml
Full name	NDR2 Antibody
Synonyms	STK38L; KIAA0965; NDR2; Serine/threonine-protein kinase 38-like; NDR2 protein kinase; Nuclear Dbf2-related kinase 2

This product is for research use only, not for use in human, therapeutic or diagnostic procedure.

Background

Involved in the regulation of structural processes in differentiating and mature neuronal cells.

Recommended Dilution

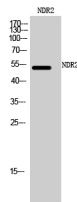
WB: 1: 500 - 1: 2000

ELISA: 1: 20000

IHC-p: 1: 50 - 300

Not yet tested in other applications.

Images



Western Blot analysis of mouse cells using NDR2 Polyclonal Antibody

Storage

-20°C for one year