

## AQP7 Rabbit Polyclonal Antibody

### Description

Product type	Primary Antibody
Code	BT-AP05832
Host	Rabbit
Isotype	IgG
Size	100ul, 50ul, 20ul
Immunogen	Synthesized peptide derived from human AQP7
Mol wt	37620
Species reactivity	Human, Mouse, Rat
Clonality	Polyclonal
Recommended application	WB
Concentration	1 mg/ml
Full name	AQP7
Synonyms	AQP7

This product is for research use only, not for use in human, therapeutic or diagnostic procedure.

### Background

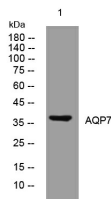
This gene encodes a member of the aquaporin family of water-selective membrane channels. The encoded protein localizes to the plasma membrane and allows movement of water, glycerol and urea across cell membranes. This gene is highly expressed in the adipose tissue where the encoded protein facilitates efflux of glycerol. In the proximal straight tubules of kidney, the encoded protein is localized to the apical membrane and prevents excretion of glycerol into urine. The encoded protein is present in spermatids, as well as in the testicular and epididymal spermatozoa suggesting an important role in late spermatogenesis. Alternative splicing of this gene results in multiple transcript variants encoding different isoforms. This gene is located adjacent to a related aquaporin gene on chromosome 9. Multiple pseudogenes of this gene have been identified.

### Recommended Dilution

WB: 1: 500 - 1: 2000

Not yet tested in other applications.

### Images



Western blot analysis of lysates from MCF-7 cells, primary antibody was diluted at 1:1000, 4°C overnight

### Storage

-20°C for 1 year