

## ARC1B Rabbit Polyclonal Antibody

### Description

Product type	Primary Antibody
Code	BT-AP05835
Host	Rabbit
Isotype	IgG
Size	100ul, 50ul, 20ul
Immunogen	Synthesized peptide derived from human ARC1B
Mol wt	40920
Species reactivity	Human, Mouse, Rat
Clonality	Polyclonal
Recommended application	WB
Concentration	1 mg/ml
Full name	ARC1B
Synonyms	ARC1B; ARPC1B; Actin related protein 2/3 complex subunit 1B 41kDa; Actin related protein 2/3 complex subunit 1B; p40 ARC; p41 ARC

This product is for research use only, not for use in human, therapeutic or diagnostic procedure.

### Background

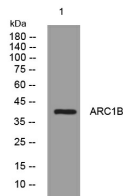
This gene encodes one of seven subunits of the human Arp2/3 protein complex. This subunit is a member of the SOP2 family of proteins and is most similar to the protein encoded by gene ARPC1A. The similarity between these two proteins suggests that they both may function as p41 subunit of the human Arp2/3 complex that has been implicated in the control of actin polymerization in cells. It is possible that the p41 subunit is involved in assembling and maintaining the structure of the Arp2/3 complex. Multiple versions of the p41 subunit may adapt the functions of the complex to different cell types or developmental stages. This protein also has a role in centrosomal homeostasis by being an activator and substrate of the Aurora A kinase.

### Recommended Dilution

WB: 1: 500 - 1: 2000

Not yet tested in other applications.

### Images



Western blot analysis of lysates from PC-12 cells, primary antibody was diluted at 1:1000, 4°C overnight

### Storage

-20°C for 1 year