

NDUFA4L2 Polyclonal Antibody

Description

Product type	Primary Antibody
Code	BT-AP05847
Host	Rabbit
Isotype	IgG
Size	20ul, 50ul, 100ul
Immunogen	The antiserum was produced against synthesized peptide derived from human NDUFA4L2. AA range:38-87
Mol wt	9966
Species reactivity	Human, Mouse
Clonality	Polyclonal
Recommended application	WB, ELISA
Concentration	1 mg/ml
Full name	NDUFA4L2 Antibody
Synonyms	NDUFA4L2; NADH dehydrogenase [ubiquinone] 1 alpha subcomplex subunit 4-like 2; NADH-ubiquinone oxidoreductase MLRQ subunit homolog; NUOMS

This product is for research use only, not for use in human, therapeutic or diagnostic procedure.

Background

NDUFA4L2 is a Protein Coding gene. Among its related pathways are Metabolism and Alzheimers disease. An important paralog of this gene is NDUFA4.

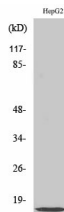
Recommended Dilution

WB: 1: 500 - 1: 2000

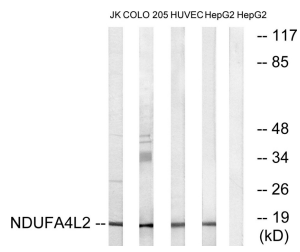
ELISA: 1: 20000

Not yet tested in other applications.

Images



Western Blot analysis of various cells using NDUFA4L2 Polyclonal Antibody diluted at 1:2000



Western blot analysis of lysates from HepG2, HUVEC, COLO, and Jurkat cells, using NDUFA4L2 Antibody. The lane on the right is blocked with the synthesized peptide.

Storage

-20°C for one year

501 Changsheng S Rd, Nanhu Dist, Jiaxing, Zhejiang, China

Tel: 86 21 31007137 | E-mail: save@bt-laboratory.com | www.bt-laboratory.com