

NDUFA8 Polyclonal Antibody

Description

Product type	Primary Antibody
Code	BT-AP05848
Host	Rabbit
Isotype	IgG
Size	20ul, 50ul, 100ul
Immunogen	The antiserum was produced against synthesized peptide derived from human NDUFA8. AA range:109-158
Mol wt	20105
Species reactivity	Human, Mouse
Clonality	Polyclonal
Recommended application	WB, IHC-p, ELISA
Concentration	1 mg/ml
Full name	NDUFA8 Antibody
Synonyms	NDUFA8; NADH dehydrogenase [ubiquinone] 1 alpha subcomplex subunit 8; Complex I-19kD; CI-19kD; Complex I-PGIV; CI-PGIV; NADH-ubiquinone oxidoreductase 19 kDa subunit

This product is for research use only, not for use in human, therapeutic or diagnostic procedure.

Background

NADH dehydrogenase [ubiquinone] 1 alpha subcomplex subunit 8 encoded by NDUFA8 belongs to the complex I 19 kDa subunit family. Mammalian complex I is composed of 45 different subunits. This protein has NADH dehydrogenase activity and oxidoreductase activity. It plays an important role in transferring electrons from NADH to the respiratory chain. The immediate electron acceptor for the enzyme is believed to be ubiquinone. Alternative splicing of this gene results in multiple transcript variants encoding different isoforms.

Recommended Dilution

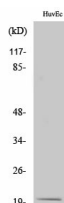
WB: 1: 500 - 1: 2000

IHC: 1: 100 - 1: 300

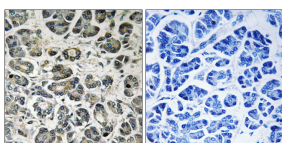
ELISA: 1: 40000

Not yet tested in other applications.

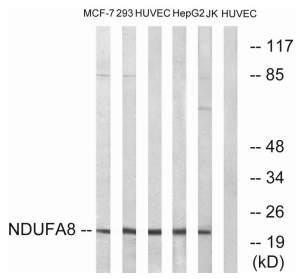
Images



Western Blot analysis of various cells using NDUFA8 Polyclonal Antibody diluted at 1:1000



Immunohistochemistry analysis of paraffin-embedded human pancreas tissue, using NDUFA8 Antibody. The picture on the right is blocked with the synthesized peptide.



Western blot analysis of lysates from HUVEC, MCF-7, Jurkat, HepG2, and 293 cells, using NDUFA8 Antibody. The lane on the right is blocked with the synthesized peptide.

Storage

-20°C for one year

501 Changsheng S Rd, Nanhu Dist, Jiaxing, Zhejiang, China

Tel: 86 21 31007137 | E-mail: save@bt-laboratory.com | www.bt-laboratory.com