

## NDUFB1 Polyclonal Antibody

### Description

<b>Product type</b>	Primary Antibody
<b>Code</b>	BT-AP05850
<b>Host</b>	Rabbit
<b>Isotype</b>	IgG
<b>Size</b>	20ul, 50ul, 100ul
<b>Immunogen</b>	The antiserum was produced against synthesized peptide derived from human NDUFB1. AA range:7-56
<b>Mol wt</b>	6961
<b>Species reactivity</b>	Human
<b>Clonality</b>	Polyclonal
<b>Recommended application</b>	IHC-p, ELISA
<b>Concentration</b>	1 mg/ml
<b>Full name</b>	NDUFB1 Antibody
<b>Synonyms</b>	NDUFB1; NADH dehydrogenase [ubiquinone] 1 beta subcomplex subunit 1; Complex I-MNLL; CI-MNLL; NADH-ubiquinone oxidoreductase MNLL subunit

**This product is for research use only, not for use in human, therapeutic or diagnostic procedure.**

### Background

NDUFB1 (NADH: ubiquinone Oxidoreductase Subunit B1) is a Protein Coding gene. Among its related pathways are Alzheimer's disease and Respiratory electron transport, ATP synthesis by chemiosmotic coupling, and heat production by uncoupling proteins. GO annotations related to this gene include NADH dehydrogenase (ubiquinone) activity and NADH dehydrogenase activity.

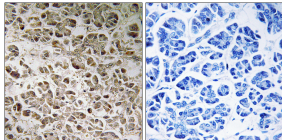
### Recommended Dilution

IHC: 1: 100 - 1: 300

ELISA: 1: 20000

Not yet tested in other applications.

### Images



Immunohistochemistry analysis of paraffin-embedded human pancreas, using NDUFB1 Antibody. The picture on the right is blocked with the synthesized peptide.

### Storage

-20°C for one year

501 Changsheng S Rd, Nanhu Dist, Jiaxing, Zhejiang, China

Tel: 86 21 31007137 | E-mail: [save@bt-laboratory.com](mailto:save@bt-laboratory.com) | [www.bt-laboratory.com](http://www.bt-laboratory.com)