

NDUFC2 Polyclonal Antibody

Description

Product type	Primary Antibody
Code	BT-AP05854
Host	Rabbit
Isotype	IgG
Size	20ul, 50ul, 100ul
Immunogen	The antiserum was produced against synthesized peptide derived from human NDUC2. AA range:51-100
Mol wt	14188
Species reactivity	Human, Rat
Clonality	Polyclonal
Recommended application	IHC-p, ELISA
Concentration	1 mg/ml
Full name	NDUFC2 Antibody
Synonyms	NDUFC2; HLC1; NADH dehydrogenase [ubiquinone] 1 subunit C2; Complex I-B14.5b; CI-B14.5b; Human lung cancer oncogene 1 protein; HLC-1; NADH-ubiquinone oxidoreductase subunit B14.5b

This product is for research use only, not for use in human, therapeutic or diagnostic procedure.

Background

NDUFC2 (NADH: ubiquinone Oxidoreductase Subunit C2) is a Protein Coding gene. Among its related pathways are Alzheimer's disease and Respiratory electron transport, ATP synthesis by chemiosmotic coupling, and heat production by uncoupling proteins. GO annotations related to this gene include NADH dehydrogenase (ubiquinone) activity. An important paralog of this gene is NDUFC2-KCTD14.

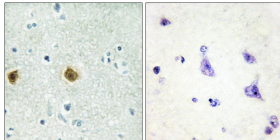
Recommended Dilution

IHC: 1: 100 - 1: 300

ELISA: 1: 10000

Not yet tested in other applications.

Images



Immunohistochemistry analysis of paraffin-embedded human brain tissue, using NDUFC2 Antibody. The picture on the right is blocked with the synthesized peptide.

Storage

-20°C for one year

501 Changsheng S Rd, Nanhu Dist, Jiaxing, Zhejiang, China

Tel: 86 21 31007137 | E-mail: save@bt-laboratory.com | www.bt-laboratory.com